

NEPIC DIRECTORY 2021



YOUR COMPREHENSIVE GUIDE
TO THE PROCESS SECTOR IN
NORTH EAST ENGLAND.



Working Together for Industry and the Environment

BOC is the UK and Ireland's largest provider of industrial, medical, and special gases as well as related equipment and engineering services. We produce, package, and distribute thousands of different types of gases to our customers every day.

In Teesside, BOC operates one of the largest industrial gas pipeline clusters in the world and we have supported our major customers in the region by investing more than £100m on industrial gas related facilities in the past decade.

We are helping to create a cleaner future, leading the growth and development of the hydrogen economy and offering technologies to reduce emissions and support decarbonisation net zero targets.

For more information on BOC in the UK and Ireland please contact us:

UK 0800 111 333 or BOCOnline.co.uk Ireland 1890 355 255 or www.BOCOnline.ie

BOC is a Linde company, the leading global gases and engineering business with a mission to make the world more productive.

For worldwide capabilities of Linde visit www.linde-gas.com

CONTENTS

WHO WE ARE

Chairman's Welcome	05
Chief Executive's Foreword	07
Meet the Team	09

MAXIMISE YOUR MEMBERSHIP

Your NEPIC	10
Led By Industry	13
Meet Our Board	15
Join Us	23
Annual Membership Benefits	27
Developing Strong Cluster Connections	31
Maximise Your Membership	34

Company Profiles	42
Classifications	154

NEPIC MEMBERSHIP
page 23



YOUR NEPIC & OUR
INDUSTRY | page 10

VIEW OUR PROFILE ON P.53

WHAT'S
INSIDE

Hello and Welcome.

The 2021 company
Directory for the
**largest cluster of
chemical, pharmaceutical
& process companies**
in the UK.

CHAIRMAN'S WELCOME



I am delighted to welcome you to the NEPIC Directory 2021, our first for a couple of years. As you are reading this then it should be safe to assume you are involved, somehow directly or indirectly, in the process industry here in the North East of England and as such you will know that it continues to be a vibrant and diverse sector contributing significantly to our region's economy and wellbeing. If you are not, then hopefully this publication will spur you to become so!

To say that 2020 was interesting, and not entirely as expected, would be an understatement. In early 2020, as we were planning major events like Meet the Members and the release of the 2020 Directory, little did

we know that an invisible organism was in the process of invading our consciousness causing a degree of pandemonium and pandemic in our lives.

We did not know then just how important Teams and Zoom would become in our business and personal lives and how we would all change the way we worked, NEPIC included. We pivoted our operational model to a virtual one which meant that we replaced a printed Directory with an on-line version with some very positive feedback.

There is no doubt that the government's focus since our last Directory has been elsewhere than on driving the Chemistry Council Sector Deal forward and the sector situation has as always been mixed with some successes, along with some threats and issues.

There has been a national focus on sustainability and delivery of a Net Zero economy which has benefitted us locally with commitments to recycling of plastics, waste reprocessing and energy generation and of course NZT's CCUS project and a variety of blue hydrogen projects.

Freeports and Teesworks are now concrete opportunities for our sector rather than a future hope.

The focus on finding vaccines for CV-19 also served as an impetus locally with several of our member companies involved actively.

As NEPIC despite the pandemic and the radical changes forced on us all hindering us in some areas we did make significant progress in a couple of areas:

- We've successfully (re)engaged with local government (LEPs / CAs), regional and national industry organisations (CIA, CATCH etc) and are increasingly recognised as being at the centre of the process industries in the NE of England helping to influence, shape policy and promote growth in our industry and region
- Our efforts to build a sustainable financial position were delayed but the pandemic showed us a different way to support our members and represent their interests both locally and nationally. I really do think in that sense it has strengthened us; the question now is how to capitalise on this?

In January 2020 I said that there is much to be optimistic about as we enter yet another decade which will see the 4th Industrial Revolution really move through the gears. NEPIC's desire is to work with all our members to represent your interests, satisfy your needs and help deliver a sustainable future for the process industry in the NE of England – the region which was at the heart of the first industrial revolution 200 years or so ago and which will I am confident be at the heart of the 4th one as well.

It has not necessarily gone to plan since then, but that does not mean that the message was wrong - in fact as we come out of the pandemic, I am even more convinced of its validity.

Once again welcome to the NEPIC Directory 2021. I am positive it will be of great value to you, and I look forward to you all taking full part in the success of NEPIC and our region.

Mark

Mark Kenrick
NEPIC Chairman



Sterling Pharma Solutions supports NEPIC

Sterling is headquartered in the North East of England, with four facilities located across the globe. The organisation now employs over 800 people in the UK and US.

As a growing business we are always looking for new talent to join our team.

Visit www.sterlingpharmasolutions.com/careers for more.

Service. Passion. Science.

CHIEF EXECUTIVE'S FOREWORD



Over the past 18 months, I have described the pliability of our remarkable network and the significant, game-changing announcements that have delivered timely, renewed confidence and palpable optimism across the business community in the region. As I put pen to paper, this message remains unchanged, and we continue to receive positive news in relation to groundbreaking investments and revolutionary projects coming to the North East.

Britishvolt confirmed Blyth as the chosen location of their £2.6bn battery Gigafactory and, a masterplan was unveiled for the UK's first hydrogen transport hub. A second wind was offered to Teesside's energy industry as GE Renewable Energy announced a blade manufacturing plant at Teesport - and £20m of government investment was also confirmed to

support the development of the Teesworks Offshore Manufacturing Centre.

A greener future is now firmly on the horizon for manufacturing and construction as government set out an ambitious blueprint to deliver the world's first low-carbon industrial sector. Net Zero Teesside was one of 9 green tech projects that will undertake engineering and design studies for the roll out of decarbonisation infrastructure for carbon capture, usage and storage and hydrogen. In the meanwhile, a showcase of the very best in UK science, and advanced manufacturing, was taking place in Billingham and Barnard Castle as both FUJIFILM Diosynth Biotechnologies and GSK rose to the challenge in supporting the global mobilisation of vaccine manufacturing.

Nissan announced a major expansion of electric vehicle production - a pivotal moment in the electric vehicle revolution that will provide a substantial boost to the automotive sector and its many supply chains including chemicals. A major collaboration between member companies Johnson Matthey, CPI and Thomas Swan to optimise battery technology was also confirmed.

Wilton International on Teesside received a wave of investment wins and developments. The Sembcorp Energy UK owned site was chosen as the location for the onshore electricity converter station for the Sofia Wind Farm. Sembcorp and 8 Rivers Capital also announced plans to build a 300-megawatt net-zero emissions power plant at the site. In addition, Australian firm Peak Resources confirmed Wilton as the location of its multi-million-pound rare earth processing plant - and ReNew ELP began construction on the world's first commercial-scale plastic recycling plant using innovative hydrothermal upgrading technology.

BP have too announced big plans for the region. The proposed project, coming to Teesside, will be the largest in the UK, producing up to 1GW of 'blue' hydrogen – 20% of the UK's hydrogen target – by 2030 and supporting development of region as UK's first hydrogen transport hub.

Back in the North of the region, Quotient Sciences, the drug development and manufacturing accelerator, announced a £6.3m investment in its recently acquired manufacturing facility in Alnwick – and collaborative work via North East Pharma continues to progress medicine reshoring ambitions.

In parallel to the wave of good news and successes across the region, the NEPIC team has continued to support the needs and interests of the process sector in the North East of England. Our network remains buoyant, and we have welcomed many new members to the cluster over the past year who cover a broad range of product and service offerings. We have provided a platform for networking, the sharing of business information and peer-to-peer learning – elements that remain at the heart of our work. Furthermore, we have maintained a vital role in influencing government, regulators and policy makers and remain in close and regular contact with UK and regional industry bodies, local authorities, MPs, and government departments.

Looking forward to the months ahead, our work will continue as we support businesses and ensure industry in this region thrives – and we remain committed to representing the needs and views of our members, along with delivering a programme that provides valuable growth support. This remarkable network is a strong reminder of the power of our Cluster, along with the strength of the outstanding companies and connected business community that call the North East their home. A community that we are so proud to represent. All that we have achieved would not have been possible without you. May I take this opportunity to thank you for your continued support of the Cluster and your engagement in our activities. We look forward to working with you long into the future to ensure this region remains a thriving home to the largest single cluster of process, chemical, and energy companies anywhere in the UK.

Philip

Philip Aldridge, Chief Executive Officer, NEPIC

We are Nepic

Working to grow the
process sector in
North East England.

DON'T JUST TAKE
OUR WORD FOR IT...

LOOK OUT FOR OUR FANTASTIC
MEMBER TESTIMONIALS!



Philip Aldridge
CHIEF
EXECUTIVE
philip.aldridge@nepic.co.uk



Joanne Fryett
BUSINESS DEVELOPMENT
DIRECTOR
joanne.fryett@nepic.co.uk



Lynne Aungiers
OFFICE MANAGER
& PA TO CEO
lynne.aungiers@nepic.co.uk



Liz Rooney
MEMBERSHIP
MANAGER
liz.rooney@nepic.co.uk



Louise Gwynne-Jones
COMMUNICATIONS
DIRECTOR
louise.gwynne-jones@nepic.co.uk



Lucy Tyreman
MARKETING
EXECUTIVE
lucy.tyreman@nepic.co.uk



Victoria Pepper
GRAPHIC DESIGN &
DIGITAL MARKETING
victoria.pepper@nepic.co.uk



Kath Birkin
PROJECT
ADMINISTRATOR
kath.birkin@nepic.co.uk



Glen Kelly
SUPPLY CHAIN NORTH
EAST PROJECT MANAGER
glen.kelly@nepic.co.uk



Sandra Ozturk
SUPPLY CHAIN NORTH EAST
PROJECT ADMINISTRATOR
sandra.ozturk@nepic.co.uk



Ryan Siddall
INNOVATION
MANAGER
ryan.siddall@nepic.co.uk



Chris Holt
INNOVATION
MANAGER
chris.holt@nepic.co.uk



Onur Agca
INNOVATION
MANAGER
onur.agca@nepic.co.uk

Visit the NEPIC website for full contact details and staff bios.
www.nepic.co.uk

YOUR NEPIC

WORKING CLOSELY WITH OUR MEMBER COMPANIES TO FORGE MEANINGFUL BUSINESS RELATIONSHIPS.

At NEPIC, we support the needs and interests of the processing sector in the North East of England. We exist to ensure industry in this region thrives – and that there are investments, innovations and a network that have the potential to create jobs and opportunities long into the future.

By working together, we can identify these opportunities, facilitate connections, promote collaboration, and enable growth. Furthermore, we actively work beyond our traditional stakeholder base with universities, research institutes and public bodies to leverage additional value for the sector.

SUPPORT YOUR NEEDS

We get to know your business so that we can provide you with the right support and connect you to the right people at the right time.

BUILD MEANINGFUL RELATIONSHIPS

We have built trusted relationships with manufacturers, operators, supply chain businesses and support organisations

ENABLE GROWTH

By supporting members at a local level in a collaborative environment, we can facilitate business growth and value for the region.

PROTECT YOUR INTERESTS

We continually address industry challenges and champion the sector to ensure the long-term sustainability of processing in the North East.

IDENTIFY OPPORTUNITIES

By working closely with members we identify and showcase upcoming business opportunities that supports investment, promotes diversification, and inspires innovation.

PROMOTE COLLABORATION

We have developed an established and trusted community that acts as a catalyst for collaboration.

INCREASE YOUR VISIBILITY

Through our establish systems, channels, and events, we shed a spotlight on your expertise through regular sharing of information, business news and updates.

“THE PROCESS INDUSTRY IN THE NORTH EAST OF ENGLAND IS A WORLD CLASS, HIGH VALUE PROCESS INDUSTRY CLUSTER BASED ON INNOVATIVE, SUSTAINABLE HIGH-TECH MANUFACTURING. WE ARE RECOGNISED AS PASSIONATE AND PROUD OF THE PROCESS INDUSTRY, OUR REGION AND ITS STAKEHOLDERS”

OUR LANDSCAPE

The North East is home to the single LARGEST cluster of CHEMICAL, PHARMACEUTICAL and PROCESS companies anywhere in the UK, and the second largest in the whole of Europe.

Together the multinational companies, that call the North East their home, manufacture 50 per cent of UK foundation chemicals and a third of UK pharmaceuticals – bringing more than £2.1 billion of value to the region each year.

They are the industry of industries, employing 39,000 people locally. Tens of thousands of jobs within the region’s downstream chemical-using industries – including healthcare, electronics, automotive and textiles – rely on its continued success too.

NEPIC, the North East Process Industry Cluster, represents this vital sector. Established in 2005, we work to ensure industry thrives in our region – and that there are investments, innovations and a collaborative network that will create jobs and opportunities long into the future.

Connecting classrooms with Careers

Can you play your part in helping us inspire more young people than ever before?

From bitesize inspiration sessions to more immersive and interactive virtual work experiences, we provide live employer-led career programmes for students across Tees Valley. Our programmes help young people engage directly with employers, increase their understanding of career opportunities, prepare for the world of work, and improve their skills and aspirations.

Our virtual programmes are all delivered online so it's never been easier to play your part and get involved. All we need is your time, passion and experience. No matter the sector or make-up of your business, you can make a difference.

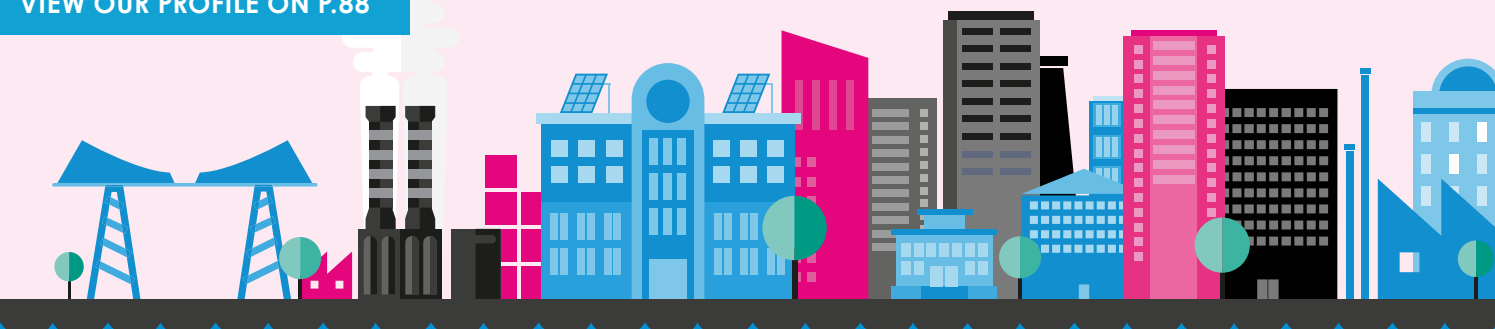
For some that might be contributing to our bitesize taster sessions, insightful inspiration days or more in-depth, sector-specific placements. For others, it could simply be taking part in Q&As, providing interview tips and offering virtual site tours. And for those worried about getting involved for the first time, our experienced team will provide you with all the support you need to help you get started.

For more information, please visit our website or contact Lauren at lauren@hightidefoundation.co.uk

hightidefoundation.co.uk



VIEW OUR PROFILE ON P.88



YOUR
NEPIC

LED BY INDUSTRY

FOUNDED IN 2004, WE ARE AN INDUSTRY-LED, NOT-FOR-PROFIT ORGANISATION WITH OUR CORE FUNDING COMING DIRECTLY FROM THE MEMBER COMPANIES WHO SUPPORT OUR MISSION AND VALUES.

A major strength of NEPIC as a cluster is its level of engagement with senior people within each of our participating member companies. NEPIC is owned by its member companies and led-by-industry via a strong Board and Leadership Team. NEPIC is chaired by Mark Kenrick and led by chief executive, Philip Aldridge.

The elements that exist within the Cluster include the Board, that is responsible for formal governance including strategy, financial and operational activities; the NEPIC Leadership Council, responsible for guidance, leading issue focus groups and ambassadorship - and the NEPIC team, charged with overall delivery and implementation.



Supporting innovators in complex industries



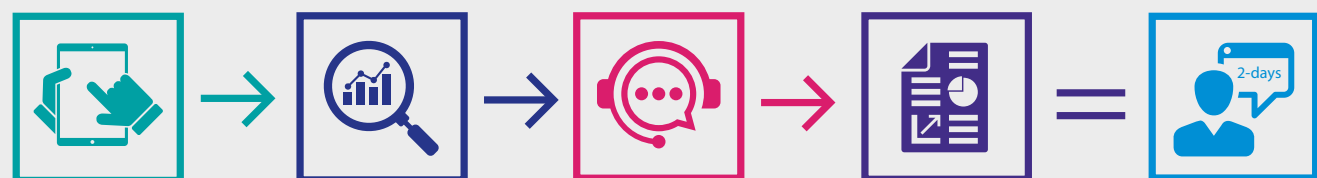
Horizon Works provides a full range of marketing solutions to companies who operate regionally, nationally and internationally.

We have a strong track record of working with organisations across the process industry and with many NEPIC members including Koch Engineering Solutions, Industrial and Marine Hydraulics, Atlas Copco Rental UK, Devine Chemicals, Tech Projects and Parker Bioscience Filtration.

[READ MORE >](#)

FREE MARKETING REVIEW FOR NEPIC MEMBERS

Book your marketing review now >



Complete our online marketing diagnostic Snapshot360
[COMPLETE NOW >](#)

Receive your Snapshot360 report scoring all aspects of your marketing

Set up a telephone consultation with our marketing experts

Receive a detailed recommendations report with an action plan

Member offer equates to 2 days of consultancy

"I was really impressed with the depth and level of detail that the marketing review went into. We will undoubtedly see benefits to our business as we work our way through the actions that came from this work."

Jamie Brown, CEO, Francis Brown

Marketing that is clear, connected and purposeful

Get in touch >

+44 (0) 345 075 5955

www.horizonworks.co.uk



THE NEPIC BOARD IS CHAIRED BY MARK KENRICK AND COMPRISES OF TEN NON-EXECUTIVE DIRECTORS REPRESENTING THE BROAD RANGE OF SECTORS AND BUSINESSES THAT EXIST WITHIN THE NEPIC NETWORK.



Mark Kenrick
INDEPENDENT



Sue Houston OBE
INDEPENDENT



Dai Hayward MBE
CHIEF EXECUTIVE
Micropore
Technologies



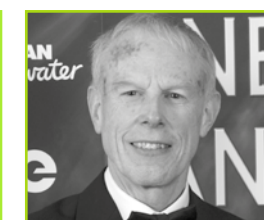
James Robson MBE
CHAIRMAN
Entrepreneurs Forum



Peter Snaith
PARTNER & HEAD
OF CHEMICALS
Womble Bond Dickinson



Dr Stan Higgins OBE
NON-EXECUTIVE DIRECTOR
Industrial Technology
Systems



Martin Inskip
FORMER SITE
DIRECTOR
MSD



Philip Aldridge
CHIEF EXECUTIVE
OFFICER
NEPIC



Malcolm Kidd
EMEA MONOMERS
BUSINESS DIRECTOR
Mitsubishi Chemicals



Roger Kilburn
CHIEF EXECUTIVE
OFFICER
Quotient Sciences

Visit the NEPIC website to read more.
www.nepic.co.uk

GET TO KNOW OUR BOARD

Mark Kenrick

Mark retired at the end of 2020 from full time employment just over 40 years after graduating as a mechanical engineer from Imperial College, London.

He spent all his working life in process related industries initially as an engineer with ICI then working with them and follow-on business owners in technical, operations, projects, commercial and general management roles. His career took him to live and work in both Brazil and the USA and manage operations and businesses across USA and Europe under UK, Spanish and Korean ownership.

Latterly, he was CEO of Lotte Chemical UK Ltd and then of px Group. He previously held senior roles in a number of European Industry associations, has been a non-executive director of NEPIC since 2015 and Chair since 2018.

Sue Houston OBE

Sue retired in late 2019 after spending 41 years working for the public sector. She spent 39 years working for the Department for Business, Energy and Industrial Strategy with varied roles both in London and the North East. South Tees Development Corporation (now Teesworks) was where she spent her last 2 years in employment working with potential investors to the site.

Sue has worked with NEPIC throughout its existence and with other organisations supporting the sector. Her extensive network includes many of the NEPIC members. Sue received her OBE in 2014 for services to the economy of the North East.

Dai Hayward

Dai has been CEO of Micropore since 2010 and has led the transition from a lab-based technology to a growing global business. Dai graduated in Chemistry and Physiology, has an MBA, and is a Fellow of the UK's Royal Society of Chemistry. Dai's career has been spent in performance chemicals and related businesses, including with Dow Chemical and Thomas Swan in various locations in the UK, Middle East and USA.

Dai is a founder Director of NEPIC, a past Chairman of the UK Chemical Industry Association's Responsible Care Board and Specialised Organic Chemicals Sector Association. He has been awarded an MBE for services to exports and the North East Chemical industry, the Commercial Development & Marketing Association (USA) Golden C Award for professional excellence in commercial development and the UK's Chemical Industries Association Award. Dai also volunteers for The Prince's Trust in his spare time.

James Robson MBE

Although he was born in Trinidad, James has always considered Tees Valley in the UK, the birthplace of both his father and his grandfather, to be his true home.

He is best known for his founding of Exwold Technology, a company from the region that today employs nearly 120 staff and has a turnover in excess of £13 million. Although he remains on the board of Exwold, since 2011 he has focused on mentoring start-up businesses in the region.

James is a non-executive director of Dyer Engineering and chairs the Micropore Technologies board. James was awarded an MBE for Services to North East Businesses in the UK New Year's honours list in 2011.

Philip Aldridge

NEPIC is led by CEO, Philip Aldridge. Before being appointed Chief Executive in April 2018, Philip worked with NEPIC for 6 years helping deliver ERDF projects and supporting pharmaceutical members.

Prior to his time with the Cluster, Philip held roles at the Centre of Excellence in Life Sciences and technical management positions within GSK in the UK and US. With extensive pharmaceutical process development and manufacturing experience in the fields of antibiotics and biopharmaceuticals, Philip holds a first degree in Biochemistry, a masters in Biochemical Engineering and is a member of the Institution of Chemical Engineers.



SINCE JOINING NEPIC
A YEAR AGO, WE
HAVE BEEN ABLE TO
**USE NETWORKING
OPPORTUNITIES PROVIDED
TO OPEN DOORS**
AND BRING IN NEW
BUSINESS AT SEVERAL LEVELS.

Addison Project Plc



We are one of the UK’s leading independent specialist Mechanical Engineering businesses with over 30 years’ experience of the Power and Industrial sectors.

We have the experience and expertise to deliver both practical and innovative engineering solutions whilst providing a full range of repair, maintenance, upgrade and outage services from our sites across the country.

Core Sectors

- Petro-Chemicals
- Gas Fired Power Generation
- Biomass
- Energy from Waste
- Food and Beverage
- Waste Water
- Paper
- Cement

Core Skills

- Pressure welding
- FGT overhaul and maintenance
- Ducting and ash handling systems
- Grate overhaul and maintenance
- Full turnkey solutions
- Design and fabrication of plate and pipework
- 24/7 365 days a year emergency call out
- Ongoing maintenance support
- Engineering consultancy
- SLA framework agreements

Peter Snaith

Peter is a partner and head the manufacturing sector group at Newcastle based law firm Womble Bond Dickinson. He has 20 years’ experience of the sector.

Before joining the firm, he worked as an in-house lawyer in the chemical sector for a number of ICI’s international speciality chemicals businesses. He was subsequently Global Legal Manager for ICI’s Acrylics business following its sale to Ineos. Since his return to private practice, he has maintained a focus on working with chemicals and chemistry-using companies and with manufacturing companies in general. Coupled with that Peter has a wealth of experience in advising ports, and suppliers and customers of transport and logistics companies, in relation to their infrastructure projects and operational activities.

With his previous industry experience and familiarity with industry norms Peter offers practical support and assistance in relation to all manner of commercial arrangements, including purchasing, manufacturing, sales, joint ventures, and collaborative R&D and other ancillary activities.

Martin Inskip

Martin Inskip has had a career in pharmaceutical secondary manufacturing primarily in a plant in the North East England, part of a global supply division for a USA based major research-based innovator company.

Responsible for oral solid dose high volume production and packaging and supply to global markets over a long period of time. Experience of technical and project management, quality management and international regulatory requirements, lean manufacturing methods and site leadership. A director of NEPIC and was part of the MMIC front end study and design team and is now a director of North East Pharma Limited.

Roger Kilburn

Roger was appointed Managing Director of Arcinova in February 2021 following its acquisition by Quotient Sciences. Previously, as the Arcinova CEO, he was appointed in September 2019 to strengthen the executive management team and accelerate its growth.

Prior to joining Arcinova, Roger was CEO of IBioIC where he established and developed a highly successful, industry led, biotechnology innovation centre hosted by the University of Strathclyde. Other key roles have included General Manager of a pharma service business based in the USA and Managing Director of one of the largest global controlled drug API manufacturers. With over 25 years of experience as an international business leader, Roger has a proven track record in business turnaround, growth, and leadership. Roger’s background is in the biotechnology, chemical and fine chemicals sectors working for industry giants such as ICI and Johnson Matthey. Roger is graduate of the University of South Wales with a first-class degree in Chemical Engineering. He is a guest lecturer at Heriot Watt University and Chaired and sat on the boards of numerous Government, industrial, academic, and learned institutions. Roger is also a Fellow of the IChemE.

VIEW OUR PROFILE ON P.52



WE CREATE. WE CARE. WE CAN. WE MAKE IT WORK.

“PROVIDING FULLY INTEGRATED, MULTIDISCIPLINARY SUPPORT THROUGH THE LIFE CYCLE OF AN ASSET – DRIVING EFFICIENCIES, IMPROVING PLANT PERFORMANCE AND REDUCING COSTS.”

Bilfinger UK supports industrial services customers across the chemical & petrochemical, nuclear, oil & gas, pharmaceuticals & biopharma, power & energy and water markets, enhancing the efficiency of assets, ensuring a high level of availability and reducing maintenance costs.

We aim to be the trusted engineering and services partner of choice, delivering intelligent solutions to blue chip clients in process industries across the UK.

Our services cover all life cycle phases from planning and design through to development and construction as well as commissioning, maintenance, modification and decommissioning.

Bilfinger UK firmly believes that effective work delivery is unlocked through implementation of efficient planning and scheduling. Our basic motto is: *“do the right work, at the right time, to the right quality first time”*, and this can only be achieved if the planning and scheduling process is being executed to the appropriate level of detail by well-trained personnel.

With a highly skilled workforce of over 2,500 employees operating from eight UK offices, Bilfinger UK upholds the highest standards of safety, compliance and quality.

Bilfinger UK consistently focuses on the individual needs of our clients. We have both the means and the skills needed to offer precise, tailored solutions of various scales. In this regard, we rely on the diversity of our skills.

“EVERYWHERE WE WORK, WE ENSURE THAT OUR CLIENTS CAN CONCENTRATE ON WHAT THEY DO BEST: THEIR CORE BUSINESS.”



ENGINEERING & DESIGN

- Process
- Mechanical
- EC&I
- Civil & Structural
- 3D Design & Modelling
- Consultancy

MAINTENANCE, MODIFICATIONS & OPERATIONS

- Bilfinger Maintenance Concept
- Bilfinger Turnaround Concept
- Access Solutions
- Electrical Control & Instrumentation
- Insulation
- Mechanical
- Painting & Specialist Coatings

DIGITALISATION

- Bilfinger Industrial 360°
- Bilfinger Connected Asset Performance
- Bilfinger Smart App
- Bilfinger PIDGraph
- Bilfinger Mobile Solutions
- Cyber & OT Security

AUTOMATION

- Process Automation & System Integration
- Plant Optimisation
- Functional Safety
- Digital Enablement
- Consultancy & Feed
- Multidisciplinary Solutions
- Project Management
- Service Support
- Industrial Networks

PANEL DESIGN & MANUFACTURING

- Intelligent Panel Design
- Power & Control Systems
- Product Testing
- Signage & Labelling
- Outsourcing

FABRICATION

- Fabrication
- Plastics Engineering

OUR
BOARD

Dr Stan Higgins OBE

Stan, a Fellow of the Royal Society of Chemistry, was founding Director and former CEO of NEPIC.

Now retired, he held Managing Director and Technical Leadership roles in several leading specialty, fine and pharma chemical companies. Stan currently holds non-Exec positions in companies in the sector, giving direction to innovation and statistical improvement projects.

Malcolm Kidd

Malcolm is a chemical engineer by background and has had over 30 years of experience in the chemical industry in a range of operations, commercial and business roles.

The majority of his career has been in the methacrylates industry, and centred around the Cassel site on Teesside, but Malcolm has also worked on projects in Singapore, China and Saudi Arabia. With previous roles bringing responsible for plant management, procurement, sales and marketing, and logistics and supply chain, Malcolm's current role is as Executive Vice President for the methacrylates business of Mitsubishi Chemicals in the EMEA region. Malcolm has been a non-executive director of NEPIC since November 2020.



Member
Testimonial

NEPIC BRINGS TOGETHER & SUPPORTS ALL COMPANIES

FROM SMALL ONE MAN BANDS THROUGH TO MULTI-NATIONALS.

WE HAVE BENEFITED FROM THIS SUPPORT OVER THE LAST 10 YEARS.

BWC Performance

Website: www.uk.bilfinger.com | Email: info.b-uk@bilfinger.com | Phone: +44 161 537 5555

Address: Wilson House, Kelburn Court, Datten Park, Birchwood, Warrington, WA3 6UT

Join Us.

And **unlock opportunities**,
collaboration, learning
& growth.

NEPIC MEMBERSHIP

WOULD YOU LIKE TO GROW YOUR BUSINESS
BY BECOMING AN ESTABLISHED SUPPLIER TO
NORTH EAST ENGLAND'S LARGEST
INDUSTRIAL SECTOR?

NEPIC supports the needs and interests of the processing sector in the North East of England. We exist to ensure industry in this region thrives – and that there are investments, innovations and a network that have the potential to create jobs and opportunities long into the future.

.....

For more than a decade, we have delivered high quality business growth support, working with member companies of all shapes and sizes. Our network includes member companies and key stakeholders that work within or would like to become involved in the region's largest industrial sector.

If your organisation is looking to grow or become part of the sector or supply chain, we have the network, tools, and expertise available to help you grow and succeed.

What will I gain from NEPIC membership?

NEPIC membership offers you exclusive access to a vast network of like-minded businesses that have come together to support the growth of companies and the chemical-processing sector in the North East. The NEPIC network is focused yet diverse.

We bring together established, traditional industries with the entrepreneurs and innovators of the future.

Where small businesses meet large multi-nationals, universities, and regional trade organisations to share knowledge, identify opportunities, develop solutions, and forge lasting and meaningful relationships.



SO, HOW DOES IT WORK?

Membership will equip you with a wide range of resources - including access to networking opportunities, business information, peer-to-peer knowledge sharing, and increased visibility – all of which are designed to help you strengthen and build on your own success.

EVENTS | Each year we run a range of events across the region; from breakfast meets to roundtables, workshops, exhibitions, conferences, and webinars. Each one is designed to offer you the opportunity to meet the right people, understand their needs and communicate your message.

KNOWLEDGE SHARING | We have enabled a culture of knowledge and information sharing across the cluster. Through inspirational event content, peer-to-peer networking and mentoring support, help is available to drive your business forward; overcome growth barriers and achieve success within the region's vibrant process sectors.

PROMOTING | We understand the importance of promotion and information. As a member you will benefit from a modern, responsive news service, access to our extensive social networks and on-line promotion via Members' Hub and Members' Directory.



CHAMPIONING | We are continually addressing industry challenges and championing the sector to ensure the long-term sustainability of processing in North East England, along with a business environment that allows you to prosper and grow.

And whilst you are busy networking and building your business through these resources, we are also hard at work tackling the key issues facing industry such as Covid recovery, EU exit, talent attraction and retention, integration and digitalisation, sustainability and clean growth – and of course, attracting and supporting inward investment!

Membership is open to all businesses regardless of size or location. All we ask is that you are a registered business and currently working with the process sector or actively seeking to do so.

With annual subscription fees starting from as little as £320, why not join us today and become part of North East England's most powerful industry Cluster.

TOGETHER, WE CAN CLUSTER. CONNECT. GROW.

If you are interested in NEPIC membership but would like to know more about how we can help you and your business, our membership team can answer all your questions. Find all the information and contact details you need on our website today.

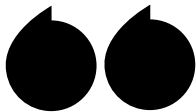
Visit www.nepic.co.uk/join-us or contact:

Joanne Fryett, Business Development Director via joanne.fryett@nepic.co.uk

Liz Rooney, Membership Manager via liz.rooney@nepic.co.uk.

MEMBER TESTIMONIALS

Don't just take our word for it. Here's what our members say ...



BEING PART OF THE NEPIC COMMUNITY HELPS WITH YOUR UNDERSTANDING OF THE REGION, PROVIDES A PLATFORM TO SHOWCASE YOUR SERVICES THAT IS A KEY ELEMENT OF THE BUSINESS DEVELOPMENT STRATEGY.

MARTIN CONCANNON, BUSINESS MANAGER, FRAZER NASH

"As Doosan Babcock grows its presence in the North East of England, our membership of NEPIC has been invaluable in helping us reach out to our customers and suppliers. Without NEPIC, the process of connecting would take longer and be far less reaching."

Lee Taylor, Senior Business Development Manager, Doosan Babcock

"Being a part of NEPIC has enabled us to grow our brand - increasing awareness within the process industry on who we are, what we do, and why we do it. This has led to collaborations with other cluster members that has won us new business and increased our stature and reputation."

Ian Gemski, Managing Director, Tekgem

"Being a member of NEPIC helps us to connect with key players in the process sector, stay up to date with the latest industry news and grow our network across the North East."

Charlotte Branch, Business Development Manager, Square One Law

.....

"We are passionate about building a vibrant, prosperous North East and we're proud to be part of an organisation that champions that goal too. Being part of NEPIC brings us closer to industry and helps us forge connections with like-minded businesses across the region."

Martin Concannon, Business Manager, Frazer Nash



SINCE JOINING NEPIC, ADDISON HAS SEEN ITS PROFILE GO FROM STRENGTH TO STRENGTH WITHIN THE REGION. WHILST IT IS VITAL TO BE PROACTIVE AND TAKE PART IN THE SUPPORT OFFERED, NEPIC WILL OPEN THOSE DOORS FOR YOU.

KEVIN SIMMONDS, GROUP SALES MANAGER, ADDISON PROJECT PLC

FLEXITALLIC NORTH EAST

Flexitallic

VIEW OUR PROFILE ON P.80

**TEESSIDE
GLOBAL MANUFACTURER
LOCAL DELIVERY**



Situated in Middlesbrough on the Riverside Park Industrial Estate, Flexitallic North East's 3,500 sq ft Service Centre is ideally situated to service the needs of customers across Teesside and the North East.

With a presence in Teesside for over 25 years, Flexitallic is dedicated to support the Industrial Sealing and Gaskets needs across all industry types - Process - Chemical, Biofuel, Pharmaceutical, Power, OEM, Storage Tanks.

- Gasket and Sealing Solutions
- Large stockholdings of sheet materials, semi metallic gaskets and elastomeric seals
- Same day delivery available
- Gasket cutting and manufacturing capabilities
- Engineering/technical support
- Training available - ECITB/ICHEME approved courses

For more information, contact:

T: +44 (0)1642 245906 E: middlesbrough@flexitallic.eu www.flexitallic.com

YOUR
NEPIC

ANNUAL MEMBERSHIP BENEFITS

JOINING BENEFITS

To welcome our new members to the Cluster, and help introduce you to the existing membership, you will receive the following joining benefits upon sign-up:

- New Member introduction via our monthly new members e-bulletin
- Subscription to NEPIC's weekly bulletins covering events, news, and new members
- Access to Members' Hub – blog and information site for member companies
- New Member introduction via Members' Hub
- Company introduction at NEPIC's monthly members meeting, Cluster Connect
- Welcome post via NEPIC social media platforms

On an annual basis NEPIC members receive an array of benefits. Our annual membership benefits are detailed below under four sub-categories – Marketing, Signposting & Referrals, Events & Networking and Business Savings.

MARKETING SUPPORT & RESOURCES

- NEPIC Membership Certificate
- NEPIC Membership Logo
- NEPIC Directory company profile listing and logo
- NEPIC Directory – digital access and hard copies available at face-to-face events
- On-line company profile listing
- Subscription to member bulletins and updates
- On-line Member-to-Member promotion
- Access to Members' Hub
- Unlimited news, event, and promotional content posting via Members' Hub



Worried About Industrial Cyber Security Threats?

Tekgem bridges the gap between Information Technology (IT) and Operational Technology (OT).

Many industrial organisations are concerned by the growing risks posed by cyber attacks. Tekgem is an independant, experienced and trusted advisor, and we help mitigate these risks.

Our proven credibility is aligned with top industry regulators such as the HSE whom we work alongside closely. We act as an extension of your team, giving back control so you can focus on what you do best.

For a conversation on how to secure your systems call:
+44 (0)1642 062 109 or email: enquiries@tekgem.co.uk

VIEW OUR PROFILE ON P.143

www.tekgem.co.uk

TEKGEM
BRIDGING THE GAP BETWEEN IT & OT

YOUR
NEPIC

BUSINESS SUPPORT, SIGNPOSTING & REFERRALS

- Signposting – via telephone, email, web, or social media
- Face-to-face business support & advice
- Access to the network – business interactions between SMEs and large companies
- Connections & business opportunities
- Knowledge sharing
- Inter-cluster referrals
- Latest funding & business support information
- Access to a dedicated sector export adviser
- Cluster determination – one company, one vote on all cluster activities

BUSINESS EVENTS & NETWORKING

- Admission to NEPIC's monthly members meeting, Cluster Connect
- Admission to NEPIC's 4-monthly members meeting, Pharma Connect
- Access to networking events & exhibitions
- Access to knowledge & best practice events
- Speaker opportunities
- Annual award entry

BUSINESS SAVINGS

- Reduced rates for all NEPIC paid activities including event admission, advertising, sponsorship, exhibition rates and marketing services.

To find out more about our offer, or to discuss maximising your current membership, please contact a member of the team. Visit www.nepic.co.uk/join-us or contact Joanne Fryett, Business Development Director via: joanne.fryett@nepic.co.uk or Liz Rooney, Membership Manager via liz.rooney@nepic.co.uk.



THE FRIENDLY NEPIC
TEAM HELP US

**INTRODUCE NORTH
EAST COMPANIES**

TO POTENTIAL
COLLABORATORS IN
OTHER PARTS OF
THE COUNTRY.

Member
Testimonial

Bonnacord Law



Industrial Technology Systems Ltd (ITS), is a specialist independent systems integrator, offering a range of automation solutions to highly regulated industries including pharmaceutical, biopharmaceutical, medical device, chemical, and energy to enhance plant performance, control and visualisation.

ITS' solutions are designed to utilise proven technologies to improve operational efficiency, quality control, data visibility, traceability and regulatory compliance.

We design and implement a range of process control, data visualisation, OEE, serialisation, UDI, machine vision and traceability solutions from industry-leading suppliers to add value.

ITS' service portfolio includes everything from consultancy, control and management information systems design to the full suite of GAMP5® compliant validation skills. ITS can provide full turn-key project implementation, together with 24-7-365 support and regulatory compliance training.

We take the quality and CSR sides of our business seriously, with ISO9001:2015 and ISO14001:2015 accreditations, we are a carbon neutral company and corporate sponsorship of the Teesside Hospice

* ISPE owns the GAMP5® trademark www.ispe.org



ITS House, High Force Road, Riverside
Park, Middlesbrough, Teesside,
TS2 1RH
T: +44 (0)1642 222232

Darwin House – Suite D, 414 The Quadrant
Birchwood Park, Warrington,
WA3 6FW
T: +44 (0)1925 818161

DEVELOPING STRONG CLUSTER CONNECTIONS

PROVIDING A PLATFORM FOR NETWORKING,
THE SHARING OF BUSINESS INFORMATION
AND PEER-TO-PEER LEARNING IS AT THE
HEART OF OUR WORK

.....

One of our primary objectives is to ensure our members can meet regularly with industry colleagues to forge meaningful relationships and develop strong and lasting connections—whilst gaining invaluable insights, inspiration, and ideas.

CLUSTER CONNECT

Cluster Connect is your first port of call once joining the Cluster, and a place to return to time and time again to catch up with members of the NEPIC community and hear the latest news, promote developments and network with your target audience.

This free, monthly meeting will bring you together regularly with fellow members and offers the opportunity to make introductions, develop connections and gain support and inspiration from industry colleagues, along with helping to raise your personal and business profile.

Cluster Connect also offers members and partners the opportunity to present to the network in a friendly and informal atmosphere. Furthermore, when held face-to-face, hosting opportunities are also available that provide a fantastic opportunity for you to showcase your business and its facilities.

For further information about Cluster Connect and to view our upcoming event dates, visit www.nepic.co.uk/clusterconnect or www.nepic.co.uk/events.

Alternatively, contact the membership team for more information and support: Joanne Fryett, Business Development Director, joanne.fryett@nepic.co.uk | Liz Rooney, Membership Manager, liz.rooney@nepic.co.uk.



YOUR
NEPIC

PHARMA CONNECT

North East England boasts a thriving pharmaceutical sector that has long been referred to as the 'jewel in the crown of British Industry'. The region is home to nearly 200 life science and healthcare companies that generate a combined turnover of £10.5 billion and contribute 33% of the UK's pharmaceutical GDP.

To support this vibrant sector of our network, Pharma Connect was established with a focus on developing the pharmaceutical sector and its supply chain community through engagement, introductions, best practice sharing and networking.

Held on a four-monthly basis and free for members to attend, each event incorporates a round table introduction and updates from a pharmaceutical manufacturer, member-company SME and academic body.

To view our upcoming Pharma Connect event dates, visit www.nepic.co.uk/events



WE ARE GRATEFUL FOR
**THE OPPORTUNITY NEPIC
HAVE GIVEN US**

TO PRESENT AT A NUMBER
OF THEIR CONFERENCES
TO TALK ABOUT HOW
OUR EXPERIENCES HAVE
HELPED TO BENEFIT THE
PROCESS SECTOR.

Frazer-Nash

Member
Testimonial

**We can keep you
safe and secure at
all times from physical
and cyber attacks!**

VIEW OUR PROFILE ON P.105

Benefits Include:

- CCTV
- ANPR
- DOOR ACCESS
- BIOMETRICS
- CYBER SECURITY
- FREE IT RISK REPORT
- CYBER ESSENTIALS
- CYBER ESSENTIALS PLUS
- PEN TESTING
- STAFF TRAINING

Norton **01642 792567**
Newcastle **0191 8160444**
Newton Aycliffe **01325 582121**
info@worktraq.co.uk

lucid

TRANSPARENT TECHNOLOGY SOLUTIONS

MAXIMISE YOUR MEMBERSHIP

THROUGH YOUR MEMBERSHIP OF NEPIC,
YOU ARE PART OF THE LARGEST CLUSTER
OF CHEMICAL, PHARMACEUTICAL AND
PROCESS COMPANIES IN THE UK.

NEPIC membership is companywide. To ensure you are fully maximising your membership, we've pulled together a series of easy steps and resources.

Take advantage of your exclusive & unlimited news service.

NEPIC's digital news service is your promotional partner. It is exclusive, targeted, and unlimited – but most importantly it is free and easy to use! To get involved, simply log-in to our website and post your latest news and updates. Then, leave the rest to us! As well as your posts featuring on our news page, we will also include within our weekly e-bulletin and share across our social platforms.

Be well networked and informed.

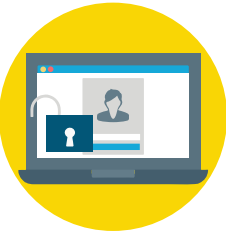
Providing a platform for networking, the sharing of business information and peer-to-peer learning is at the heart of our work. Visit our events page today to see what's currently on offer – and don't forget to share relevant events with relevant people within your business.

Tell your people.

Tell your teams about your NEPIC membership by email or internal communications. To make this quick and simple, we have scripted straightforward content for you to share across your organisation.

MEMBERS HUB

Get your news
heard...



1. Login - click the Members Hub link above the search box on the NEPIC homepage.



2. Script your content. Remember, interesting stories grab attention.



3. Is it a news, event or promotion? Check the correct box.



4. Upload an image or external link & submit for review.

Tell your customers.

The power of association is real. Ensure your customers are aware you are working with NEPIC to support not only your own business ambitions but that of the sector and region too. Display the 'Member of NEPIC' logo within your email footers, online sites and platforms and marketing material.

Update your contact information

Ensure we are talking to the right people. The more contacts we have within your business, the greater the benefit is to you.

Regularly review the membership benefits checklist

We are continually expanding our offering to members. Keep up to date with the latest benefits and download our handy engagement checklist today.

Know your fellow member companies

Take time to thumb through the latest NEPIC Directory and meet your fellow members. We exist to facilitate connections between member companies and ensure the value and capability is retained within this great region.

Get social

Follow us on social media for the latest news and membership updates. After all, small snippets of content, at a time that suits, can be the best way to stay informed.

Still looking for more information or support?

Contact a member of the team today to discuss further or visit our website to access supporting resources.

www.nepic.co.uk/maximise-your-membership/

ADDISON PROJECTS IS ONE OF THE UK'S LEADING INDEPENDENT PROVIDERS OF ENGINEERING SERVICES, SUPPLYING PROJECT & CONSTRUCTION MANAGEMENT, MULTI-DISCIPLINED DESIGN AND DAY TO DAY TECHNICAL ENGINEERING SUPPORT SERVICES.

YOUR COMPLETE ENGINEERING SOLUTION



Addison Project Plc was established in 1997 with the acquisition of the former ICI Hillhouse Projects Group.

Our in-house engineering services include; project, construction and SHE management, process engineering, engineering design for instrument, electrical, mechanical, piping, civil and structural. We also have a full range of CDM services including principal designer and principal contractor. We also offer a range of Specialist Services including; the provision of engineering resources, 3D laser scanning / modelling, BIM, mini process plant (Skid) design and manufacture, 4D planning DSEAR/ATEX, pipe stressing & relief calculations and HV design engineering up to and including 33kv.

At Addison we use virtual reality technology during our design reviews, to guarantee the success of the construction phase prior to arriving on site. Here we can identify hazards so that we design out the risks during the design phase, to avoid unplanned events, where most of the health and safety risks occur.

Notwithstanding the ways we use high technology to make our projects run more efficiently and productively, we believe what sets us apart from our competitors is our people. Our people are our strongest asset. We employ only the very best staff available and instil tremendous attitudes into them so we add value, not cost, to our customer's projects.

We work seamlessly with our extensive blue chip client and sub-contractors, acting always as a TEAM with a common and shared objective of delivering successful projects time and time again. We believe as a team we are all responsible together for delivery of safe and successful projects. This approach is adopted on all our projects and support services, no matter how small the client's requirement may be.

Our customer's business success is put as our number one priority, often working as an extension of their own in house resources and becoming a true engineering partner, sharing their goals and objectives.

We go the extra mile to exceed your expectations with a work ethos of openness, transparency, respectfulness and trust. Addison Project are totally committed to delivering exceptional levels of customer service in a highly competitive way. Our objectives is to help your business perform at its very best, which is key to our long term success as this is how we achieve repeat business and sustainable and successful long term relationships with our customers.

Addison have a very keen eye on the environment, being highly conscious of our potential impact on Co2 emissions, global warming and rising sea levels and are committed to both our own company and our clients to protecting the environment and preventing pollution and complying with all legislation and regulation. We have an expanding fleet of zero emission electric vehicles and we also supplement our own energy consumption by generating electricity through our 400 KW/H solar array. We use high performing insulation materials to avoid energy wastage from our facilities and we recycle everything we can. We are also involved in initiatives which give back to the environment.

Above all, SAFETY is our number one priority. Our commitment to H&S is shown in the awarding of the RoSPA Order of Distinction after 22 years of successive Gold Awards.



ADDISON PROJECT
Riverside Park | Middlesbrough | Teesside | TS2 1RU
01642 694 000

Elizabeth House | Daresbury Park | Daresbury
Warrington | Cheshire | WA4 4BS
01928 786 000

Hillhouse Business Park | Bourne Road | Thornton
Cleveleys | Lancashire | FY5 4QD
01253 898 200

www.addisonproject.co.uk

[VIEW OUR PROFILE ON P.44](#)

MEMBERSHIP BENEFITS

MAKE CONNECTIONS

Attend networking events, meetings and webinars offered by NEPIC to make introductions and connections - including NEPIC's monthly Cluster Connect and regular Pharma Connect events.

STAY INFORMED

Read the weekly e-newsletter to stay informed about member services and updates, programmes, events and meetings that can help your business. Let us be your source for happenings across the process sector in the North East and within our business community.

I AM A NEPIC MEMBER

The power of association is real. Prominently display your NEPIC membership certificate and 'member of NEPIC' logo within your email footers, online sites and platforms and marketing materials.

BUSINESS RESOURCES

Visit the NEPIC website to stay up to date on the latest cluster happenings. Find information on the latest funding and business support, programmes and events and webinars, along with news and information to help your business grow.

SAVINGS

Membership of NEPIC offers discounted rates on major events and conferences covering delegate passes, exhibition stands, advertising and marketing support.

ONLINE LISTING

Login to NEPIC Members' Hub to expand and customise your online business listing into a full page of information, including web links, case studies and contact information.

NEPIC DIRECTORY

Take time to thumb through the latest NEPIC Directory - available in both hardcopy and digital format - and meet your fellow members. This annual publication also offers fantastic advertising opportunities to help you further raise your company profile.

UNLIMITED NEWS SERVICE

NEPIC's digital news service is your promotional partner. It is exclusive, targeted, and unlimited - but most importantly it is free and easy to use! To get involved, simply log-in to our website and post your latest news and updates.

FOLLOW OUR LIST OF BENEFITS TO ENSURE YOU ARE GETTING GREAT VALUE FROM YOUR MEMBERSHIP.

SOCIAL MEDIA MARKETING

Follow NEPIC's LinkedIn and Twitter accounts to get updates on cluster activities and member services. Tag NEPIC into your own posts and we'll be sure to share.

SPONSORSHIP MARKETING

Sponsorship marketing works. Consider sponsoring a NEPIC event to raise your profile in the business community. Ask us for a menu of options.

BUNDLED SERVICES

Consider a bundled service that incorporates your annual membership subscription and additional marketing support. Forward planning of your business and engagement activities with the Cluster will increase engagement and save time and money. A powerful combination!

SHOUT ABOUT YOUR ACHIEVEMENTS

Nominate your business for a NEPIC award as we come together each January to celebrate the region's best and brightest companies and people from across the sector.

EVENTS PROMOTION

Enter your events and webinars to our online blog and we'll share this information within the network via our weekly e-bulletin and busy social networks. Also, visit: www.nepic.co.uk/member-news to stay informed.

DEALS & PROMOTIONS

Offer an online Hot Deal via our website to market a special promotion or member-to-member discount. Also, check out promotions offered by other members to see where you can save on products and services.

IDEAS & OPPORTUNITIES

Gain the latest in industry best practice and peer-to-peer learning, along with sector development and business opportunities, through attendance of NEPIC conferences, events, and meetings.

SPEAKER OPPORTUNITIES

Speaker opportunities are regularly available to NEPIC members. If you would like to share your inspirational story, knowledge, and supplier opportunities within the NEPIC network, talk to a member of the team today.

[VIEW OUR PROFILE ON P.57](#)



LIFTING BEAMS, LIFTING FRAMES, SPREADER BEAMS, RIG DESIGN, CONSULTANCY DESIGN



BRITLIFT ARE A LEADING DESIGNER AND MANUFACTURER OF LIFTING EQUIPMENT BASED IN THE UK.

WE PRIDE OURSELVES ON OUR INNOVATIVE AND CREATIVE THINKING, OUR UNDERSTANDING OF CLIENT/INDUSTRY NEEDS AND OUR QUALITY AND FLEXIBILITY OF SERVICE. A CORE COMPONENT OF BRITLIFT'S BUSINESS IS CONSULTATION. OUR ENGINEERS HAVE YEARS OF EXPERIENCE WITHIN THE LIFTING INDUSTRY AND ARE AVAILABLE TO HELP YOU COMPLETE YOUR PROJECTS ON TIME AND ON BUDGET.

WWW.BRITLIFT.COM | 01305 236123 | SALES@BRITLIFT.COM

Member Profiles

Alphabetical company listings for all current NEPIC Members.

NEPIC Member



Profile
Log in to members hub to view full details

MAIN CONTACT
John Smith
Manager
email.email.co.uk
+44 (0) 191 000 0001
CONTACT DETAILS
 www.nepicmember.com
 info@nepicmember.com
 +44 (0) 191 000 0001
1 nepic member, Middlesbrough

CATEGORY
Consultants

NEPIC Member



Profile
Log in to members hub to view full details

MAIN CONTACT
John Smith
Manager
email.email.co.uk
+44 (0) 191 000 0001
CONTACT DETAILS
 www.nepicmember.com
 info@nepicmember.com
 +44 (0) 191 000 0001
1 nepic member, Middlesbrough

CATEGORY
Consultants

NEPIC Member



Profile
Log in to members hub to view full details

MAIN CONTACT
John Smith
Manager
email.email.co.uk
+44 (0) 191 000 0001
CONTACT DETAILS
 www.nepicmember.com
 info@nepicmember.com
 +44 (0) 191 000 0001
1 nepic member, Middlesbrough

CATEGORY
Consultants

NEPIC Member



Profile
Log in to members hub to view full details

MAIN CONTACT
John Smith
Manager
email.email.co.uk
+44 (0) 191 000 0001
CONTACT DETAILS
 www.nepicmember.com
 info@nepicmember.com
 +44 (0) 191 000 0001
1 nepic member, Middlesbrough

CATEGORY
Consultants

NEPIC Member



Profile
Log in to members hub to view full details

MAIN CONTACT
John Smith
Manager
email.email.co.uk
+44 (0) 191 000 0001
CONTACT DETAILS
 www.nepicmember.com
 info@nepicmember.com
 +44 (0) 191 000 0001
1 nepic member, Middlesbrough

CATEGORY
Consultants

NEPIC Member



Profile
Log in to members hub to view full details

MAIN CONTACT
John Smith
Manager
email.email.co.uk
+44 (0) 191 000 0001
CONTACT DETAILS
 www.nepicmember.com
 info@nepicmember.com
 +44 (0) 191 000 0001
1 nepic member, Middlesbrough

CATEGORY
Consultants

NEPIC Member



Profile
Log in to members hub to view full details

MAIN CONTACT
John Smith
Manager
email.email.co.uk
+44 (0) 191 000 0001
CONTACT DETAILS
www.nepicmember.com
info@nepicmember.com
+44 (0) 191 000 0001
1 nepic member, Middlesbrough

CATEGORY
Consultants

NEPIC Member



Profile
Log in to members hub to view full details

MAIN CONTACT
John Smith
Manager
email.email.co.uk
+44 (0) 191 000 0001
CONTACT DETAILS
www.nepicmember.com
info@nepicmember.com
+44 (0) 191 000 0001
1 nepic member, Middlesbrough

CATEGORY
Consultants

NEPIC Member



Profile
Log in to members hub to view full details

MAIN CONTACT
John Smith
Manager
email.email.co.uk
+44 (0) 191 000 0001
CONTACT DETAILS
www.nepicmember.com
info@nepicmember.com
+44 (0) 191 000 0001
1 nepic member, Middlesbrough

CATEGORY
Consultants

NEPIC Member



Profile
Log in to members hub to view full details

MAIN CONTACT
John Smith
Manager
email.email.co.uk
+44 (0) 191 000 0001
CONTACT DETAILS
www.nepicmember.com
info@nepicmember.com
+44 (0) 191 000 0001
1 nepic member, Middlesbrough

CATEGORY
Consultants

NEPIC Member



Profile
Log in to members hub to view full details

MAIN CONTACT
John Smith
Manager
email.email.co.uk
+44 (0) 191 000 0001
CONTACT DETAILS
www.nepicmember.com
info@nepicmember.com
+44 (0) 191 000 0001
1 nepic member, Middlesbrough

CATEGORY
Consultants

NEPIC Member



Profile
Log in to members hub to view full details

MAIN CONTACT
John Smith
Manager
email.email.co.uk
+44 (0) 191 000 0001
CONTACT DETAILS
www.nepicmember.com
info@nepicmember.com
+44 (0) 191 000 0001
1 nepic member, Middlesbrough

CATEGORY
Consultants

NEPIC Member



Profile
Log in to members hub to view full details

MAIN CONTACT
John Smith
Manager
email.email.co.uk
+44 (0) 191 000 0001
CONTACT DETAILS
 www.nepicmember.com
 info@nepicmember.com
 +44 (0) 191 000 0001
1 nepic member, Middlesbrough

CATEGORY
Consultants

NEPIC Member



Profile
Log in to members hub to view full details

MAIN CONTACT
John Smith
Manager
email.email.co.uk
+44 (0) 191 000 0001
CONTACT DETAILS
 www.nepicmember.com
 info@nepicmember.com
 +44 (0) 191 000 0001
1 nepic member, Middlesbrough

CATEGORY
Consultants

NEPIC Member



Profile
Log in to members hub to view full details

MAIN CONTACT
John Smith
Manager
email.email.co.uk
+44 (0) 191 000 0001
CONTACT DETAILS
 www.nepicmember.com
 info@nepicmember.com
 +44 (0) 191 000 0001
1 nepic member, Middlesbrough

CATEGORY
Consultants

NEPIC Member



Profile
Log in to members hub to view full details

MAIN CONTACT
John Smith
Manager
email.email.co.uk
+44 (0) 191 000 0001
CONTACT DETAILS
 www.nepicmember.com
 info@nepicmember.com
 +44 (0) 191 000 0001
1 nepic member, Middlesbrough

CATEGORY
Consultants

NEPIC Member



Profile
Log in to members hub to view full details

MAIN CONTACT
John Smith
Manager
email.email.co.uk
+44 (0) 191 000 0001
CONTACT DETAILS
 www.nepicmember.com
 info@nepicmember.com
 +44 (0) 191 000 0001
1 nepic member, Middlesbrough

CATEGORY
Consultants

NEPIC Member



Profile
Log in to members hub to view full details

MAIN CONTACT
John Smith
Manager
email.email.co.uk
+44 (0) 191 000 0001
CONTACT DETAILS
 www.nepicmember.com
 info@nepicmember.com
 +44 (0) 191 000 0001
1 nepic member, Middlesbrough

CATEGORY
Consultants

NEPIC Member



Profile
Log in to members hub to view full details

MAIN CONTACT
John Smith
Manager
email.email.co.uk
+44 (0) 191 000 0001
CONTACT DETAILS
www.nepicmember.com
info@nepicmember.com
+44 (0) 191 000 0001
1 nepic member, Middlesbrough

CATEGORY
Consultants

NEPIC Member



Profile
Log in to members hub to view full details

MAIN CONTACT
John Smith
Manager
email.email.co.uk
+44 (0) 191 000 0001
CONTACT DETAILS
www.nepicmember.com
info@nepicmember.com
+44 (0) 191 000 0001
1 nepic member, Middlesbrough

CATEGORY
Consultants

NEPIC Member



Profile
Log in to members hub to view full details

MAIN CONTACT
John Smith
Manager
email.email.co.uk
+44 (0) 191 000 0001
CONTACT DETAILS
www.nepicmember.com
info@nepicmember.com
+44 (0) 191 000 0001
1 nepic member, Middlesbrough

CATEGORY
Consultants

NEPIC Member



Profile
Log in to members hub to view full details

MAIN CONTACT
John Smith
Manager
email.email.co.uk
+44 (0) 191 000 0001
CONTACT DETAILS
www.nepicmember.com
info@nepicmember.com
+44 (0) 191 000 0001
1 nepic member, Middlesbrough

CATEGORY
Consultants

NEPIC Member



Profile
Log in to members hub to view full details

MAIN CONTACT
John Smith
Manager
email.email.co.uk
+44 (0) 191 000 0001
CONTACT DETAILS
www.nepicmember.com
info@nepicmember.com
+44 (0) 191 000 0001
1 nepic member, Middlesbrough

CATEGORY
Consultants

NEPIC Member



Profile
Log in to members hub to view full details

MAIN CONTACT
John Smith
Manager
email.email.co.uk
+44 (0) 191 000 0001
CONTACT DETAILS
www.nepicmember.com
info@nepicmember.com
+44 (0) 191 000 0001
1 nepic member, Middlesbrough

CATEGORY
Consultants

We act as an Inspection authority to a number of blue-chip companies and combine our expertise in this field with our Materials and Mechanical services.

Delivering our support globally, we are highly experienced across a range of sectors including chemicals and petrochemicals, oil & gas, pharma, bulk storage, renewables and power generation.

We are an award-winning engineering consultancy formed in 2003 with a proven track record of delivering high value services to our clients.

With our three integrated disciplines, we are uniquely positioned to deliver added value engineering solutions providing our clients with peace of mind that the management of their assets are in safe hands.



For more information, contact:

T: +44 (0) 1642 732745 E: info@ax-ea.co.uk W: www.ax-ea.co.uk

NEPIC Member



Profile

Log in to members hub to view full details

MAIN CONTACT

John Smith
Manager
email.email.co.uk
+44 (0) 191 000 0001

CONTACT DETAILS

www.nepicmember.com

info@nepicmember.com

+44 (0) 191 000 0001

1 nepic member, Middlesbrough

CATEGORY

Consultants

NEPIC Member



Profile

Log in to members hub to view full details

MAIN CONTACT

John Smith
Manager
email.email.co.uk
+44 (0) 191 000 0001

CONTACT DETAILS

www.nepicmember.com

info@nepicmember.com

+44 (0) 191 000 0001

1 nepic member, Middlesbrough

CATEGORY

Consultants

NEPIC Member



Profile

Log in to members hub to view full details

MAIN CONTACT

John Smith
Manager
email.email.co.uk
+44 (0) 191 000 0001

CONTACT DETAILS

www.nepicmember.com

info@nepicmember.com

+44 (0) 191 000 0001

1 nepic member, Middlesbrough

CATEGORY

Consultants

NEPIC Member



Profile
Log in to members hub to view full details

MAIN CONTACT
John Smith
Manager
email.email.co.uk
+44 (0) 191 000 0001
CONTACT DETAILS
www.nepicmember.com
info@nepicmember.com
+44 (0) 191 000 0001
1 nepic member, Middlesbrough

CATEGORY
Consultants

NEPIC Member



Profile
Log in to members hub to view full details

MAIN CONTACT
John Smith
Manager
email.email.co.uk
+44 (0) 191 000 0001
CONTACT DETAILS
www.nepicmember.com
info@nepicmember.com
+44 (0) 191 000 0001
1 nepic member, Middlesbrough

CATEGORY
Consultants

NEPIC Member



Profile
Log in to members hub to view full details

MAIN CONTACT
John Smith
Manager
email.email.co.uk
+44 (0) 191 000 0001
CONTACT DETAILS
www.nepicmember.com
info@nepicmember.com
+44 (0) 191 000 0001
1 nepic member, Middlesbrough

CATEGORY
Consultants

NEPIC Member



Profile
Log in to members hub to view full details

MAIN CONTACT
John Smith
Manager
email.email.co.uk
+44 (0) 191 000 0001
CONTACT DETAILS
www.nepicmember.com
info@nepicmember.com
+44 (0) 191 000 0001
1 nepic member, Middlesbrough

CATEGORY
Consultants

NEPIC Member



Profile
Log in to members hub to view full details

MAIN CONTACT
John Smith
Manager
email.email.co.uk
+44 (0) 191 000 0001
CONTACT DETAILS
www.nepicmember.com
info@nepicmember.com
+44 (0) 191 000 0001
1 nepic member, Middlesbrough

CATEGORY
Consultants

NEPIC Member



Profile
Log in to members hub to view full details

MAIN CONTACT
John Smith
Manager
email.email.co.uk
+44 (0) 191 000 0001
CONTACT DETAILS
www.nepicmember.com
info@nepicmember.com
+44 (0) 191 000 0001
1 nepic member, Middlesbrough

CATEGORY
Consultants



From the lab to the factory Bonaccord offers award winning legal services to science based businesses.

We work across the spectrum from genetics to chemicals and from specialty engineering to satellites.

We provide commercially aware advice on both corporate and commercial legal issues to help you maximise the potential of your business.


bonaccord
the law firm for scientists

Corporate set up and
fundraising

R&D Collaborations

Manufacturing
contracts

Licensing

Sales & Distribution

Mergers &
Acquisition

CONTACT US
0131 202 6527

www.bonaccord.law
enquiries@bonaccord.law

VIEW OUR PROFILE ON P.53

NEPIC Member



CATEGORY

Consultants

Profile

Log in to members hub to view full details

MAIN CONTACT

John Smith
Manager
email.email.co.uk
+44 (0) 191 000 0001

CONTACT DETAILS

www.nepicmember.com

info@nepicmember.com

+44 (0) 191 000 0001

1 nepic member, Middlesbrough

NEPIC Member



CATEGORY

Consultants

Profile

Log in to members hub to view full details

MAIN CONTACT

John Smith
Manager
email.email.co.uk
+44 (0) 191 000 0001

CONTACT DETAILS

www.nepicmember.com

info@nepicmember.com

+44 (0) 191 000 0001

1 nepic member, Middlesbrough

NEPIC Member



CATEGORY

Consultants

Profile

Log in to members hub to view full details

MAIN CONTACT

John Smith
Manager
email.email.co.uk
+44 (0) 191 000 0001

CONTACT DETAILS

www.nepicmember.com

info@nepicmember.com

+44 (0) 191 000 0001

1 nepic member, Middlesbrough

NEPIC Member



Profile
Log in to members hub to view full details

MAIN CONTACT
John Smith
Manager
email.email.co.uk
+44 (0) 191 000 0001
CONTACT DETAILS
www.nepicmember.com
info@nepicmember.com
+44 (0) 191 000 0001
1 nepic member, Middlesbrough

CATEGORY
Consultants

NEPIC Member



Profile
Log in to members hub to view full details

MAIN CONTACT
John Smith
Manager
email.email.co.uk
+44 (0) 191 000 0001
CONTACT DETAILS
www.nepicmember.com
info@nepicmember.com
+44 (0) 191 000 0001
1 nepic member, Middlesbrough

CATEGORY
Consultants

NEPIC Member



Profile
Log in to members hub to view full details

MAIN CONTACT
John Smith
Manager
email.email.co.uk
+44 (0) 191 000 0001
CONTACT DETAILS
www.nepicmember.com
info@nepicmember.com
+44 (0) 191 000 0001
1 nepic member, Middlesbrough

CATEGORY
Consultants

NEPIC Member



Profile
Log in to members hub to view full details

MAIN CONTACT
John Smith
Manager
email.email.co.uk
+44 (0) 191 000 0001
CONTACT DETAILS
www.nepicmember.com
info@nepicmember.com
+44 (0) 191 000 0001
1 nepic member, Middlesbrough

CATEGORY
Consultants

NEPIC Member



Profile
Log in to members hub to view full details

MAIN CONTACT
John Smith
Manager
email.email.co.uk
+44 (0) 191 000 0001
CONTACT DETAILS
www.nepicmember.com
info@nepicmember.com
+44 (0) 191 000 0001
1 nepic member, Middlesbrough

CATEGORY
Consultants

NEPIC Member



Profile
Log in to members hub to view full details

MAIN CONTACT
John Smith
Manager
email.email.co.uk
+44 (0) 191 000 0001
CONTACT DETAILS
www.nepicmember.com
info@nepicmember.com
+44 (0) 191 000 0001
1 nepic member, Middlesbrough

CATEGORY
Consultants

NEPIC Member



Profile
Log in to members hub to view full details

MAIN CONTACT
John Smith
Manager
email.email.co.uk
+44 (0) 191 000 0001
CONTACT DETAILS
www.nepicmember.com
info@nepicmember.com
+44 (0) 191 000 0001
1 nepic member, Middlesbrough

CATEGORY
Consultants

NEPIC Member



Profile
Log in to members hub to view full details

MAIN CONTACT
John Smith
Manager
email.email.co.uk
+44 (0) 191 000 0001
CONTACT DETAILS
www.nepicmember.com
info@nepicmember.com
+44 (0) 191 000 0001
1 nepic member, Middlesbrough

CATEGORY
Consultants

NEPIC Member



Profile
Log in to members hub to view full details

MAIN CONTACT
John Smith
Manager
email.email.co.uk
+44 (0) 191 000 0001
CONTACT DETAILS
www.nepicmember.com
info@nepicmember.com
+44 (0) 191 000 0001
1 nepic member, Middlesbrough

CATEGORY
Consultants

NEPIC Member



Profile
Log in to members hub to view full details

MAIN CONTACT
John Smith
Manager
email.email.co.uk
+44 (0) 191 000 0001
CONTACT DETAILS
www.nepicmember.com
info@nepicmember.com
+44 (0) 191 000 0001
1 nepic member, Middlesbrough

CATEGORY
Consultants

NEPIC Member



Profile
Log in to members hub to view full details

MAIN CONTACT
John Smith
Manager
email.email.co.uk
+44 (0) 191 000 0001
CONTACT DETAILS
www.nepicmember.com
info@nepicmember.com
+44 (0) 191 000 0001
1 nepic member, Middlesbrough

CATEGORY
Consultants

NEPIC Member



Profile
Log in to members hub to view full details

MAIN CONTACT
John Smith
Manager
email.email.co.uk
+44 (0) 191 000 0001
CONTACT DETAILS
www.nepicmember.com
info@nepicmember.com
+44 (0) 191 000 0001
1 nepic member, Middlesbrough

CATEGORY
Consultants

NEPIC Member



Profile
Log in to members hub to view full details

MAIN CONTACT
John Smith
Manager
email.email.co.uk
+44 (0) 191 000 0001
CONTACT DETAILS
 www.nepicmember.com
 info@nepicmember.com
 +44 (0) 191 000 0001
1 nepic member, Middlesbrough

CATEGORY
Consultants

NEPIC Member



Profile
Log in to members hub to view full details

MAIN CONTACT
John Smith
Manager
email.email.co.uk
+44 (0) 191 000 0001
CONTACT DETAILS
 www.nepicmember.com
 info@nepicmember.com
 +44 (0) 191 000 0001
1 nepic member, Middlesbrough

CATEGORY
Consultants

NEPIC Member



Profile
Log in to members hub to view full details

MAIN CONTACT
John Smith
Manager
email.email.co.uk
+44 (0) 191 000 0001
CONTACT DETAILS
 www.nepicmember.com
 info@nepicmember.com
 +44 (0) 191 000 0001
1 nepic member, Middlesbrough

CATEGORY
Consultants

NEPIC Member



Profile
Log in to members hub to view full details

MAIN CONTACT
John Smith
Manager
email.email.co.uk
+44 (0) 191 000 0001
CONTACT DETAILS
 www.nepicmember.com
 info@nepicmember.com
 +44 (0) 191 000 0001
1 nepic member, Middlesbrough

CATEGORY
Consultants

NEPIC Member



Profile
Log in to members hub to view full details

MAIN CONTACT
John Smith
Manager
email.email.co.uk
+44 (0) 191 000 0001
CONTACT DETAILS
 www.nepicmember.com
 info@nepicmember.com
 +44 (0) 191 000 0001
1 nepic member, Middlesbrough

CATEGORY
Consultants

NEPIC Member



Profile
Log in to members hub to view full details

MAIN CONTACT
John Smith
Manager
email.email.co.uk
+44 (0) 191 000 0001
CONTACT DETAILS
 www.nepicmember.com
 info@nepicmember.com
 +44 (0) 191 000 0001
1 nepic member, Middlesbrough

CATEGORY
Consultants

NEPIC Member



Profile
Log in to members hub to view full details

MAIN CONTACT
John Smith
Manager
email.email.co.uk
+44 (0) 191 000 0001
CONTACT DETAILS
www.nepicmember.com
info@nepicmember.com
+44 (0) 191 000 0001
1 nepic member, Middlesbrough

CATEGORY
Consultants

NEPIC Member



Profile
Log in to members hub to view full details

MAIN CONTACT
John Smith
Manager
email.email.co.uk
+44 (0) 191 000 0001
CONTACT DETAILS
www.nepicmember.com
info@nepicmember.com
+44 (0) 191 000 0001
1 nepic member, Middlesbrough

CATEGORY
Consultants

NEPIC Member



Profile
Log in to members hub to view full details

MAIN CONTACT
John Smith
Manager
email.email.co.uk
+44 (0) 191 000 0001
CONTACT DETAILS
www.nepicmember.com
info@nepicmember.com
+44 (0) 191 000 0001
1 nepic member, Middlesbrough

CATEGORY
Consultants

NEPIC Member



Profile
Log in to members hub to view full details

MAIN CONTACT
John Smith
Manager
email.email.co.uk
+44 (0) 191 000 0001
CONTACT DETAILS
www.nepicmember.com
info@nepicmember.com
+44 (0) 191 000 0001
1 nepic member, Middlesbrough

CATEGORY
Consultants

NEPIC Member



Profile
Log in to members hub to view full details

MAIN CONTACT
John Smith
Manager
email.email.co.uk
+44 (0) 191 000 0001
CONTACT DETAILS
www.nepicmember.com
info@nepicmember.com
+44 (0) 191 000 0001
1 nepic member, Middlesbrough

CATEGORY
Consultants

NEPIC Member



Profile
Log in to members hub to view full details

MAIN CONTACT
John Smith
Manager
email.email.co.uk
+44 (0) 191 000 0001
CONTACT DETAILS
www.nepicmember.com
info@nepicmember.com
+44 (0) 191 000 0001
1 nepic member, Middlesbrough

CATEGORY
Consultants



BELGIUM - FRANCE - ROMANIA - POLAND - UNITED KINGDOM

Contec is an international engineering company specialising in improving and automating industrial processes and machines.

Our activities include Electrical & Instrumentation (E&I) Engineering & Design, PLC & SCADA systems, MES and Industrial IT (IIT) engineering and design.

Automatically better

We improve and automate industrial processes and machines worldwide. As a solutions provider and systems integrator, we are active across all industry sectors, including Petrochemical, Pharmaceutical, Food & Beverage, Automotive and FMCG.

A total (customer-oriented) approach

We provide a total approach: we advise, design, develop and realise system integrations of industrial processes. Our teams are close to the customer, know what is needed and have received the best training.

Creating added value

For Contec, automation means more than just improving processes and machines. In all projects Contec strives for substantial added value for the economy, people and society. We are firmly convinced that automation creates space for more meaningful jobs.

We prepare your company for the future. Contact us

WWW.CONTEC.BE

Contec United Kingdom
Benton Lane
Newcastle Upon Tyne
+44 1 913 36 19 00

INFO@CONTEC.BE

Mark Buckland | Business unit manager
Email: buckland.m@contec.be
Tel: +44 (0) 7762 818 885

THE FUTURE IS WHAT WE MAKE IT



**Solution
Partner**
A ROCKWELL AUTOMATION PARTNER



VIEW OUR PROFILE ON P.65

NEPIC Member



Profile

Log in to members hub to view full details

MAIN CONTACT

John Smith
Manager
email.email.co.uk
+44 (0) 191 000 0001

CONTACT DETAILS

www.nepicmember.com

info@nepicmember.com

+44 (0) 191 000 0001

1 nepic member, Middlesbrough

CATEGORY

Consultants

NEPIC Member



Profile

Log in to members hub to view full details

MAIN CONTACT

John Smith
Manager
email.email.co.uk
+44 (0) 191 000 0001

CONTACT DETAILS

www.nepicmember.com

info@nepicmember.com

+44 (0) 191 000 0001

1 nepic member, Middlesbrough

CATEGORY

Consultants

NEPIC Member



Profile

Log in to members hub to view full details

MAIN CONTACT

John Smith
Manager
email.email.co.uk
+44 (0) 191 000 0001

CONTACT DETAILS

www.nepicmember.com

info@nepicmember.com

+44 (0) 191 000 0001

1 nepic member, Middlesbrough

CATEGORY

Consultants

NEPIC Member



Profile
Log in to members hub to view full details

MAIN CONTACT
John Smith
Manager
email.email.co.uk
+44 (0) 191 000 0001
CONTACT DETAILS
www.nepicmember.com
info@nepicmember.com
+44 (0) 191 000 0001
1 nepic member, Middlesbrough

CATEGORY
Consultants

NEPIC Member



Profile
Log in to members hub to view full details

MAIN CONTACT
John Smith
Manager
email.email.co.uk
+44 (0) 191 000 0001
CONTACT DETAILS
www.nepicmember.com
info@nepicmember.com
+44 (0) 191 000 0001
1 nepic member, Middlesbrough

CATEGORY
Consultants

NEPIC Member



Profile
Log in to members hub to view full details

MAIN CONTACT
John Smith
Manager
email.email.co.uk
+44 (0) 191 000 0001
CONTACT DETAILS
www.nepicmember.com
info@nepicmember.com
+44 (0) 191 000 0001
1 nepic member, Middlesbrough

CATEGORY
Consultants

NEPIC Member



Profile
Log in to members hub to view full details

MAIN CONTACT
John Smith
Manager
email.email.co.uk
+44 (0) 191 000 0001
CONTACT DETAILS
www.nepicmember.com
info@nepicmember.com
+44 (0) 191 000 0001
1 nepic member, Middlesbrough

CATEGORY
Consultants

NEPIC Member



Profile
Log in to members hub to view full details

MAIN CONTACT
John Smith
Manager
email.email.co.uk
+44 (0) 191 000 0001
CONTACT DETAILS
www.nepicmember.com
info@nepicmember.com
+44 (0) 191 000 0001
1 nepic member, Middlesbrough

CATEGORY
Consultants

NEPIC Member



Profile
Log in to members hub to view full details

MAIN CONTACT
John Smith
Manager
email.email.co.uk
+44 (0) 191 000 0001
CONTACT DETAILS
www.nepicmember.com
info@nepicmember.com
+44 (0) 191 000 0001
1 nepic member, Middlesbrough

CATEGORY
Consultants



MIDDLESBROUGH'S TRANSPORTER BRIDGE
@stephenbailey392

VIEW OUR PROFILE ON P.71

Local Jobs. Local Delivery. Local Commitment.

We are proud to be growing our operations in the North East supporting our low carbon future and creating sustainable jobs for our community across the region.

Doosan Babcock is a specialist in the delivery of engineering, aftermarket and upgrade services:



EPC

Engineering, Procurement, Construction



Asset Support

Safe through-life management



Plant Maintenance

Leader in shutdowns & turnarounds

E: lee.taylor@doosan.com
T: 0141 886 4141
M: 07827996968

In our 130th celebratory year, we are proud to support sustainable and responsible economic growth in the region by creating local jobs for local people.

At Doosan Babcock we are fully committed to ensuring that the renowned industrial history of the North East continues long into the future.

www.doosanbabcock.com

CELEBRATING 130 YEARS OF EXCELLENCE



MEMBER
PROFILES

NEPIC Member



Profile

Log in to members hub to view full details

MAIN CONTACT

John Smith
Manager
email.email.co.uk
+44 (0) 191 000 0001

CONTACT DETAILS

www.nepicmember.com
info@nepicmember.com
+44 (0) 191 000 0001

1 nepic member, Middlesbrough

CATEGORY

Consultants

NEPIC Member



Profile

Log in to members hub to view full details

MAIN CONTACT

John Smith
Manager
email.email.co.uk
+44 (0) 191 000 0001

CONTACT DETAILS

www.nepicmember.com
info@nepicmember.com
+44 (0) 191 000 0001

1 nepic member, Middlesbrough

CATEGORY

Consultants

NEPIC Member



Profile

Log in to members hub to view full details

MAIN CONTACT

John Smith
Manager
email.email.co.uk
+44 (0) 191 000 0001

CONTACT DETAILS

www.nepicmember.com
info@nepicmember.com
+44 (0) 191 000 0001

1 nepic member, Middlesbrough

CATEGORY

Consultants

NEPIC Member



Profile
Log in to members hub to view full details

MAIN CONTACT
John Smith
Manager
email.email.co.uk
+44 (0) 191 000 0001
CONTACT DETAILS
www.nepicmember.com
info@nepicmember.com
+44 (0) 191 000 0001
1 nepic member, Middlesbrough

CATEGORY
Consultants

NEPIC Member



Profile
Log in to members hub to view full details

MAIN CONTACT
John Smith
Manager
email.email.co.uk
+44 (0) 191 000 0001
CONTACT DETAILS
www.nepicmember.com
info@nepicmember.com
+44 (0) 191 000 0001
1 nepic member, Middlesbrough

CATEGORY
Consultants

NEPIC Member



Profile
Log in to members hub to view full details

MAIN CONTACT
John Smith
Manager
email.email.co.uk
+44 (0) 191 000 0001
CONTACT DETAILS
www.nepicmember.com
info@nepicmember.com
+44 (0) 191 000 0001
1 nepic member, Middlesbrough

CATEGORY
Consultants

NEPIC Member



Profile
Log in to members hub to view full details

MAIN CONTACT
John Smith
Manager
email.email.co.uk
+44 (0) 191 000 0001
CONTACT DETAILS
www.nepicmember.com
info@nepicmember.com
+44 (0) 191 000 0001
1 nepic member, Middlesbrough

CATEGORY
Consultants

NEPIC Member



Profile
Log in to members hub to view full details

MAIN CONTACT
John Smith
Manager
email.email.co.uk
+44 (0) 191 000 0001
CONTACT DETAILS
www.nepicmember.com
info@nepicmember.com
+44 (0) 191 000 0001
1 nepic member, Middlesbrough

CATEGORY
Consultants

NEPIC Member



Profile
Log in to members hub to view full details

MAIN CONTACT
John Smith
Manager
email.email.co.uk
+44 (0) 191 000 0001
CONTACT DETAILS
www.nepicmember.com
info@nepicmember.com
+44 (0) 191 000 0001
1 nepic member, Middlesbrough

CATEGORY
Consultants



Eastgate Engineering

Electrical & Instrumentation Services

Specialist Electrical & Instrumentation services company providing Engineering, Construction, Commissioning and Maintenance services covering a broad range of sectors such as Oil & Gas, Mining, Power & Infrastructure, Industrial & Manufacturing and Pharmaceutical.

We offer a full range of E & I services to our clients categorized under four main service offerings:

 **Engineering & Construction**

 **Commissioning**

 **Integrated Project Delivery**

 **Operation & Maintenance**



www.eastgateengineering.com

NEPIC Member



Profile
Log in to members hub to view full details

MAIN CONTACT
John Smith
Manager
email.email.co.uk
+44 (0) 191 000 0001
CONTACT DETAILS
www.nepicmember.com
info@nepicmember.com
+44 (0) 191 000 0001
1 nepic member, Middlesbrough

CATEGORY
Consultants

NEPIC Member



Profile
Log in to members hub to view full details

MAIN CONTACT
John Smith
Manager
email.email.co.uk
+44 (0) 191 000 0001
CONTACT DETAILS
www.nepicmember.com
info@nepicmember.com
+44 (0) 191 000 0001
1 nepic member, Middlesbrough

CATEGORY
Consultants

NEPIC Member



Profile
Log in to members hub to view full details

MAIN CONTACT
John Smith
Manager
email.email.co.uk
+44 (0) 191 000 0001
CONTACT DETAILS
www.nepicmember.com
info@nepicmember.com
+44 (0) 191 000 0001
1 nepic member, Middlesbrough

CATEGORY
Consultants

NEPIC Member



Profile
Log in to members hub to view full details

MAIN CONTACT
John Smith
Manager
email.email.co.uk
+44 (0) 191 000 0001
CONTACT DETAILS
www.nepicmember.com
info@nepicmember.com
+44 (0) 191 000 0001
1 nepic member, Middlesbrough

CATEGORY
Consultants

NEPIC Member



Profile
Log in to members hub to view full details

MAIN CONTACT
John Smith
Manager
email.email.co.uk
+44 (0) 191 000 0001
CONTACT DETAILS
www.nepicmember.com
info@nepicmember.com
+44 (0) 191 000 0001
1 nepic member, Middlesbrough

CATEGORY
Consultants

NEPIC Member



Profile
Log in to members hub to view full details

MAIN CONTACT
John Smith
Manager
email.email.co.uk
+44 (0) 191 000 0001
CONTACT DETAILS
www.nepicmember.com
info@nepicmember.com
+44 (0) 191 000 0001
1 nepic member, Middlesbrough

CATEGORY
Consultants

NEPIC Member



Profile
Log in to members hub to view full details

MAIN CONTACT
John Smith
Manager
email.email.co.uk
+44 (0) 191 000 0001
CONTACT DETAILS
www.nepicmember.com
info@nepicmember.com
+44 (0) 191 000 0001
1 nepic member, Middlesbrough

CATEGORY
Consultants

NEPIC Member



Profile
Log in to members hub to view full details

MAIN CONTACT
John Smith
Manager
email.email.co.uk
+44 (0) 191 000 0001
CONTACT DETAILS
www.nepicmember.com
info@nepicmember.com
+44 (0) 191 000 0001
1 nepic member, Middlesbrough

CATEGORY
Consultants

NEPIC Member



Profile
Log in to members hub to view full details

MAIN CONTACT
John Smith
Manager
email.email.co.uk
+44 (0) 191 000 0001
CONTACT DETAILS
www.nepicmember.com
info@nepicmember.com
+44 (0) 191 000 0001
1 nepic member, Middlesbrough

CATEGORY
Consultants

NEPIC Member



Profile
Log in to members hub to view full details

MAIN CONTACT
John Smith
Manager
email.email.co.uk
+44 (0) 191 000 0001
CONTACT DETAILS
www.nepicmember.com
info@nepicmember.com
+44 (0) 191 000 0001
1 nepic member, Middlesbrough

CATEGORY
Consultants

NEPIC Member



Profile
Log in to members hub to view full details

MAIN CONTACT
John Smith
Manager
email.email.co.uk
+44 (0) 191 000 0001
CONTACT DETAILS
www.nepicmember.com
info@nepicmember.com
+44 (0) 191 000 0001
1 nepic member, Middlesbrough

CATEGORY
Consultants

NEPIC Member



Profile
Log in to members hub to view full details

MAIN CONTACT
John Smith
Manager
email.email.co.uk
+44 (0) 191 000 0001
CONTACT DETAILS
www.nepicmember.com
info@nepicmember.com
+44 (0) 191 000 0001
1 nepic member, Middlesbrough

CATEGORY
Consultants

NEPIC Member



Profile
Log in to members hub to view full details

MAIN CONTACT
John Smith
Manager
email.email.co.uk
+44 (0) 191 000 0001
CONTACT DETAILS
www.nepicmember.com
info@nepicmember.com
+44 (0) 191 000 0001
1 nepic member, Middlesbrough

CATEGORY
Consultants

NEPIC Member



Profile
Log in to members hub to view full details

MAIN CONTACT
John Smith
Manager
email.email.co.uk
+44 (0) 191 000 0001
CONTACT DETAILS
www.nepicmember.com
info@nepicmember.com
+44 (0) 191 000 0001
1 nepic member, Middlesbrough

CATEGORY
Consultants

NEPIC Member



Profile
Log in to members hub to view full details

MAIN CONTACT
John Smith
Manager
email.email.co.uk
+44 (0) 191 000 0001
CONTACT DETAILS
www.nepicmember.com
info@nepicmember.com
+44 (0) 191 000 0001
1 nepic member, Middlesbrough

CATEGORY
Consultants

NEPIC Member



Profile
Log in to members hub to view full details

MAIN CONTACT
John Smith
Manager
email.email.co.uk
+44 (0) 191 000 0001
CONTACT DETAILS
www.nepicmember.com
info@nepicmember.com
+44 (0) 191 000 0001
1 nepic member, Middlesbrough

CATEGORY
Consultants

NEPIC Member



Profile
Log in to members hub to view full details

MAIN CONTACT
John Smith
Manager
email.email.co.uk
+44 (0) 191 000 0001
CONTACT DETAILS
www.nepicmember.com
info@nepicmember.com
+44 (0) 191 000 0001
1 nepic member, Middlesbrough

CATEGORY
Consultants

NEPIC Member



Profile
Log in to members hub to view full details

MAIN CONTACT
John Smith
Manager
email.email.co.uk
+44 (0) 191 000 0001
CONTACT DETAILS
www.nepicmember.com
info@nepicmember.com
+44 (0) 191 000 0001
1 nepic member, Middlesbrough

CATEGORY
Consultants

NEPIC Member



Profile
Log in to members hub to view full details

MAIN CONTACT
John Smith
Manager
email.email.co.uk
+44 (0) 191 000 0001
CONTACT DETAILS
www.nepicmember.com
info@nepicmember.com
+44 (0) 191 000 0001
1 nepic member, Middlesbrough

CATEGORY
Consultants

NEPIC Member



Profile
Log in to members hub to view full details

MAIN CONTACT
John Smith
Manager
email.email.co.uk
+44 (0) 191 000 0001
CONTACT DETAILS
www.nepicmember.com
info@nepicmember.com
+44 (0) 191 000 0001
1 nepic member, Middlesbrough

CATEGORY
Consultants

NEPIC Member



Profile
Log in to members hub to view full details

MAIN CONTACT
John Smith
Manager
email.email.co.uk
+44 (0) 191 000 0001
CONTACT DETAILS
www.nepicmember.com
info@nepicmember.com
+44 (0) 191 000 0001
1 nepic member, Middlesbrough

CATEGORY
Consultants

NEPIC Member



Profile
Log in to members hub to view full details

MAIN CONTACT
John Smith
Manager
email.email.co.uk
+44 (0) 191 000 0001
CONTACT DETAILS
www.nepicmember.com
info@nepicmember.com
+44 (0) 191 000 0001
1 nepic member, Middlesbrough

CATEGORY
Consultants

NEPIC Member



Profile
Log in to members hub to view full details

MAIN CONTACT
John Smith
Manager
email.email.co.uk
+44 (0) 191 000 0001
CONTACT DETAILS
www.nepicmember.com
info@nepicmember.com
+44 (0) 191 000 0001
1 nepic member, Middlesbrough

CATEGORY
Consultants

NEPIC Member



Profile
Log in to members hub to view full details

MAIN CONTACT
John Smith
Manager
email.email.co.uk
+44 (0) 191 000 0001
CONTACT DETAILS
www.nepicmember.com
info@nepicmember.com
+44 (0) 191 000 0001
1 nepic member, Middlesbrough

CATEGORY
Consultants

NEPIC Member



Profile
Log in to members hub to view full details

MAIN CONTACT
John Smith
Manager
email.email.co.uk
+44 (0) 191 000 0001
CONTACT DETAILS
www.nepicmember.com
info@nepicmember.com
+44 (0) 191 000 0001
1 nepic member, Middlesbrough

CATEGORY
Consultants

NEPIC Member



Profile
Log in to members hub to view full details

MAIN CONTACT
John Smith
Manager
email.email.co.uk
+44 (0) 191 000 0001
CONTACT DETAILS
www.nepicmember.com
info@nepicmember.com
+44 (0) 191 000 0001
1 nepic member, Middlesbrough

CATEGORY
Consultants

NEPIC Member



Profile
Log in to members hub to view full details

MAIN CONTACT
John Smith
Manager
email.email.co.uk
+44 (0) 191 000 0001
CONTACT DETAILS
www.nepicmember.com
info@nepicmember.com
+44 (0) 191 000 0001
1 nepic member, Middlesbrough

CATEGORY
Consultants

NEPIC Member



Profile
Log in to members hub to view full details

MAIN CONTACT
John Smith
Manager
email.email.co.uk
+44 (0) 191 000 0001
CONTACT DETAILS
www.nepicmember.com
info@nepicmember.com
+44 (0) 191 000 0001
1 nepic member, Middlesbrough

CATEGORY
Consultants

NEPIC Member



Profile
Log in to members hub to view full details

MAIN CONTACT
John Smith
Manager
email.email.co.uk
+44 (0) 191 000 0001
CONTACT DETAILS
www.nepicmember.com
info@nepicmember.com
+44 (0) 191 000 0001
1 nepic member, Middlesbrough

CATEGORY
Consultants

NEPIC Member



Profile
Log in to members hub to view full details

MAIN CONTACT
John Smith
Manager
email.email.co.uk
+44 (0) 191 000 0001
CONTACT DETAILS
www.nepicmember.com
info@nepicmember.com
+44 (0) 191 000 0001
1 nepic member, Middlesbrough

CATEGORY
Consultants

NEPIC Member



Profile
Log in to members hub to view full details

MAIN CONTACT
John Smith
Manager
email.email.co.uk
+44 (0) 191 000 0001
CONTACT DETAILS
www.nepicmember.com
info@nepicmember.com
+44 (0) 191 000 0001
1 nepic member, Middlesbrough

CATEGORY
Consultants

NEPIC Member



Profile
Log in to members hub to view full details

MAIN CONTACT
John Smith
Manager
email.email.co.uk
+44 (0) 191 000 0001
CONTACT DETAILS
www.nepicmember.com
info@nepicmember.com
+44 (0) 191 000 0001
1 nepic member, Middlesbrough

CATEGORY
Consultants

NEPIC Member



Profile
Log in to members hub to view full details

MAIN CONTACT
John Smith
Manager
email.email.co.uk
+44 (0) 191 000 0001
CONTACT DETAILS
www.nepicmember.com
info@nepicmember.com
+44 (0) 191 000 0001
1 nepic member, Middlesbrough

CATEGORY
Consultants

NEPIC Member



Profile
Log in to members hub to view full details

MAIN CONTACT
John Smith
Manager
email.email.co.uk
+44 (0) 191 000 0001
CONTACT DETAILS
www.nepicmember.com
info@nepicmember.com
+44 (0) 191 000 0001
1 nepic member, Middlesbrough

CATEGORY
Consultants

NEPIC Member



Profile
Log in to members hub to view full details

MAIN CONTACT
John Smith
Manager
email.email.co.uk
+44 (0) 191 000 0001
CONTACT DETAILS
www.nepicmember.com
info@nepicmember.com
+44 (0) 191 000 0001
1 nepic member, Middlesbrough

CATEGORY
Consultants

NEPIC Member



Profile
Log in to members hub to view full details

MAIN CONTACT
John Smith
Manager
email.email.co.uk
+44 (0) 191 000 0001
CONTACT DETAILS
www.nepicmember.com
info@nepicmember.com
+44 (0) 191 000 0001
1 nepic member, Middlesbrough

CATEGORY
Consultants

NEPIC Member



Profile
Log in to members hub to view full details

MAIN CONTACT
John Smith
Manager
email.email.co.uk
+44 (0) 191 000 0001
CONTACT DETAILS
www.nepicmember.com
info@nepicmember.com
+44 (0) 191 000 0001
1 nepic member, Middlesbrough

CATEGORY
Consultants

NEPIC Member



Profile
Log in to members hub to view full details

MAIN CONTACT
John Smith
Manager
email.email.co.uk
+44 (0) 191 000 0001
CONTACT DETAILS
www.nepicmember.com
info@nepicmember.com
+44 (0) 191 000 0001
1 nepic member, Middlesbrough

CATEGORY
Consultants

NEPIC Member



Profile
Log in to members hub to view full details

MAIN CONTACT
John Smith
Manager
email.email.co.uk
+44 (0) 191 000 0001
CONTACT DETAILS
www.nepicmember.com
info@nepicmember.com
+44 (0) 191 000 0001
1 nepic member, Middlesbrough

CATEGORY
Consultants

NEPIC Member



Profile
Log in to members hub to view full details

MAIN CONTACT
John Smith
Manager
email.email.co.uk
+44 (0) 191 000 0001
CONTACT DETAILS
www.nepicmember.com
info@nepicmember.com
+44 (0) 191 000 0001
1 nepic member, Middlesbrough

CATEGORY
Consultants

NEPIC Member



Profile
Log in to members hub to view full details

MAIN CONTACT
John Smith
Manager
email.email.co.uk
+44 (0) 191 000 0001
CONTACT DETAILS
www.nepicmember.com
info@nepicmember.com
+44 (0) 191 000 0001
1 nepic member, Middlesbrough

CATEGORY
Consultants

NEPIC Member



Profile
Log in to members hub to view full details

MAIN CONTACT
John Smith
Manager
email.email.co.uk
+44 (0) 191 000 0001
CONTACT DETAILS
www.nepicmember.com
info@nepicmember.com
+44 (0) 191 000 0001
1 nepic member, Middlesbrough

CATEGORY
Consultants

NEPIC Member



Profile
Log in to members hub to view full details

MAIN CONTACT
John Smith
Manager
email.email.co.uk
+44 (0) 191 000 0001
CONTACT DETAILS
www.nepicmember.com
info@nepicmember.com
+44 (0) 191 000 0001
1 nepic member, Middlesbrough

CATEGORY
Consultants

NEPIC Member



Profile
Log in to members hub to view full details

MAIN CONTACT
John Smith
Manager
email.email.co.uk
+44 (0) 191 000 0001
CONTACT DETAILS
www.nepicmember.com
info@nepicmember.com
+44 (0) 191 000 0001
1 nepic member, Middlesbrough

CATEGORY
Consultants

NEPIC Member



Profile
Log in to members hub to view full details

MAIN CONTACT
John Smith
Manager
email.email.co.uk
+44 (0) 191 000 0001
CONTACT DETAILS
www.nepicmember.com
info@nepicmember.com
+44 (0) 191 000 0001
1 nepic member, Middlesbrough

CATEGORY
Consultants

NEPIC Member



Profile
Log in to members hub to view full details

MAIN CONTACT
John Smith
Manager
email.email.co.uk
+44 (0) 191 000 0001
CONTACT DETAILS
www.nepicmember.com
info@nepicmember.com
+44 (0) 191 000 0001
1 nepic member, Middlesbrough

CATEGORY
Consultants

NEPIC Member



Profile
Log in to members hub to view full details

MAIN CONTACT
John Smith
Manager
email.email.co.uk
+44 (0) 191 000 0001
CONTACT DETAILS
www.nepicmember.com
info@nepicmember.com
+44 (0) 191 000 0001
1 nepic member, Middlesbrough

CATEGORY
Consultants

NEPIC Member



Profile
Log in to members hub to view full details

MAIN CONTACT
John Smith
Manager
email.email.co.uk
+44 (0) 191 000 0001
CONTACT DETAILS
www.nepicmember.com
info@nepicmember.com
+44 (0) 191 000 0001
1 nepic member, Middlesbrough

CATEGORY
Consultants

NEPIC Member



Profile
Log in to members hub to view full details

MAIN CONTACT
John Smith
Manager
email.email.co.uk
+44 (0) 191 000 0001
CONTACT DETAILS
www.nepicmember.com
info@nepicmember.com
+44 (0) 191 000 0001
1 nepic member, Middlesbrough

CATEGORY
Consultants

NEPIC Member



Profile
Log in to members hub to view full details

MAIN CONTACT
John Smith
Manager
email.email.co.uk
+44 (0) 191 000 0001
CONTACT DETAILS
www.nepicmember.com
info@nepicmember.com
+44 (0) 191 000 0001
1 nepic member, Middlesbrough

CATEGORY
Consultants

NEPIC Member



Profile
Log in to members hub to view full details

MAIN CONTACT
John Smith
Manager
email.email.co.uk
+44 (0) 191 000 0001
CONTACT DETAILS
www.nepicmember.com
info@nepicmember.com
+44 (0) 191 000 0001
1 nepic member, Middlesbrough

CATEGORY
Consultants



VIEW OUR PROFILE ON P.92



Civil Engineering &
Enabling Works



CDOIF &
COMAH Compliance



Control Building
Design/OBRA



Onshore
Decommissioning



Laser Scanning &
Calibration

NEPIC Member



Profile
Log in to members hub to view full details

MAIN CONTACT
John Smith
Manager
email.email.co.uk
+44 (0) 191 000 0001
CONTACT DETAILS
www.nepicmember.com
info@nepicmember.com
+44 (0) 191 000 0001
1 nepic member, Middlesbrough

CATEGORY
Consultants

NEPIC Member



Profile
Log in to members hub to view full details

MAIN CONTACT
John Smith
Manager
email.email.co.uk
+44 (0) 191 000 0001
CONTACT DETAILS
www.nepicmember.com
info@nepicmember.com
+44 (0) 191 000 0001
1 nepic member, Middlesbrough

CATEGORY
Consultants

NEPIC Member



Profile
Log in to members hub to view full details

MAIN CONTACT
John Smith
Manager
email.email.co.uk
+44 (0) 191 000 0001
CONTACT DETAILS
www.nepicmember.com
info@nepicmember.com
+44 (0) 191 000 0001
1 nepic member, Middlesbrough

CATEGORY
Consultants

NEPIC Member



Profile
Log in to members hub to view full details

MAIN CONTACT
John Smith
Manager
email.email.co.uk
+44 (0) 191 000 0001
CONTACT DETAILS
www.nepicmember.com
info@nepicmember.com
+44 (0) 191 000 0001
1 nepic member, Middlesbrough

CATEGORY
Consultants

NEPIC Member



Profile
Log in to members hub to view full details

MAIN CONTACT
John Smith
Manager
email.email.co.uk
+44 (0) 191 000 0001
CONTACT DETAILS
www.nepicmember.com
info@nepicmember.com
+44 (0) 191 000 0001
1 nepic member, Middlesbrough

CATEGORY
Consultants

NEPIC Member



Profile
Log in to members hub to view full details

MAIN CONTACT
John Smith
Manager
email.email.co.uk
+44 (0) 191 000 0001
CONTACT DETAILS
www.nepicmember.com
info@nepicmember.com
+44 (0) 191 000 0001
1 nepic member, Middlesbrough

CATEGORY
Consultants

NEPIC Member

Induchem Group



Profile
Log in to members hub to view full details
Founded in 1982, the Induchem Group specialises in the supply of process valves, automation, instrumentation and Corrosive Resistant Technologies to process industry throughout the UK. Induchem have forged relationships with World Class Suppliers to the Chemical, Pharmaceutical, Biotech, Energy, Oil & Gas and Food & Beverage industries and built a Repair & Service business that offers our customers an unparalleled value proposition. From advice on equipment selection, through to comprehensive maintenance programs, Induchem are a cradle-to-grave partner who will help you to achieve the reliability, efficiency & compliance demanded in today's competitive marketplace.

CATEGORY
Consultants

Engineering Services

MAIN CONTACT
John Smith
Manager
email.email.co.uk
+44 (0) 191 000 0001
CONTACT DETAILS
www.nepicmember.com
info@nepicmember.com
www.induchemgroup.com
+44 (0) 191 000 0001
sales@induchemgroup.com
1 nepic member, Middlesbrough

Induchem UK Ltd, Unit 1 Palatine Mill, Radnor Park Industrial Estate, Congleton, Cheshire, CW12 4XJ

NEPIC Member



Profile
Log in to members hub to view full details

MAIN CONTACT
John Smith
Manager
email.email.co.uk
+44 (0) 191 000 0001
CONTACT DETAILS
www.nepicmember.com
info@nepicmember.com
+44 (0) 191 000 0001
1 nepic member, Middlesbrough

CATEGORY
Consultants

NEPIC Member

Industrial Technology Systems (ITS)



Profile
Log in to members hub to view full details
Industrial Technology Systems Ltd (ITS) is a market-leading, independent and specialist systems integrator with over 29 years' experience in the design and integration of automation solutions in highly regulated industries, including chemical, biotech, energy and pharmaceutical. ITS delivers innovative solutions to improve performance including Management Information, Process Control, Product and Resource Tracking, Vision Systems, Cyber Security, Data Analytics. Together with our complementary Regulatory Compliance Training Courses and Computer System Validation Services, we work in partnership with our customers to increase their operational efficiency, quality and compliance.

CATEGORY
Consultants
CATEGORY
Engineering Services

MAIN CONTACT
John Smith
Manager
email.email.co.uk
+44 (0) 191 000 0001
CONTACT DETAILS
www.nepicmember.com
info@nepicmember.com
www.its-ltd.co.uk
+44 (0) 191 000 0001
enquiries@its-ltd.co.uk
1 nepic member, Middlesbrough

ITS House, High Force Road, Riverside Park, Middlesbrough, Tees Valley, TS2 1RH

NEPIC Member



Profile
Log in to members hub to view full details

MAIN CONTACT
John Smith
Manager
email.email.co.uk
+44 (0) 191 000 0001
CONTACT DETAILS
 www.nepicmember.com
 info@nepicmember.com
 +44 (0) 191 000 0001
1 nepic member, Middlesbrough

CATEGORY
Consultants

NEPIC Member



Profile
Log in to members hub to view full details

MAIN CONTACT
John Smith
Manager
email.email.co.uk
+44 (0) 191 000 0001
CONTACT DETAILS
 www.nepicmember.com
 info@nepicmember.com
 +44 (0) 191 000 0001
1 nepic member, Middlesbrough

CATEGORY
Consultants

NEPIC Member



Profile
Log in to members hub to view full details

MAIN CONTACT
John Smith
Manager
email.email.co.uk
+44 (0) 191 000 0001
CONTACT DETAILS
 www.nepicmember.com
 info@nepicmember.com
 +44 (0) 191 000 0001
1 nepic member, Middlesbrough

CATEGORY
Consultants

NEPIC Member



Profile
Log in to members hub to view full details

MAIN CONTACT
John Smith
Manager
email.email.co.uk
+44 (0) 191 000 0001
CONTACT DETAILS
 www.nepicmember.com
 info@nepicmember.com
 +44 (0) 191 000 0001
1 nepic member, Middlesbrough

CATEGORY
Consultants

NEPIC Member



Profile
Log in to members hub to view full details

MAIN CONTACT
John Smith
Manager
email.email.co.uk
+44 (0) 191 000 0001
CONTACT DETAILS
 www.nepicmember.com
 info@nepicmember.com
 +44 (0) 191 000 0001
1 nepic member, Middlesbrough

CATEGORY
Consultants

NEPIC Member



Profile
Log in to members hub to view full details

MAIN CONTACT
John Smith
Manager
email.email.co.uk
+44 (0) 191 000 0001
CONTACT DETAILS
 www.nepicmember.com
 info@nepicmember.com
 +44 (0) 191 000 0001
1 nepic member, Middlesbrough

CATEGORY
Consultants

NEPIC Member



Profile
Log in to members hub to view full details

MAIN CONTACT
John Smith
Manager
email.email.co.uk
+44 (0) 191 000 0001
CONTACT DETAILS
www.nepicmember.com
info@nepicmember.com
+44 (0) 191 000 0001
1 nepic member, Middlesbrough

CATEGORY
Consultants

NEPIC Member



Profile
Log in to members hub to view full details

MAIN CONTACT
John Smith
Manager
email.email.co.uk
+44 (0) 191 000 0001
CONTACT DETAILS
www.nepicmember.com
info@nepicmember.com
+44 (0) 191 000 0001
1 nepic member, Middlesbrough

CATEGORY
Consultants

NEPIC Member



Profile
Log in to members hub to view full details

MAIN CONTACT
John Smith
Manager
email.email.co.uk
+44 (0) 191 000 0001
CONTACT DETAILS
www.nepicmember.com
info@nepicmember.com
+44 (0) 191 000 0001
1 nepic member, Middlesbrough

CATEGORY
Consultants

NEPIC Member



Profile
Log in to members hub to view full details

MAIN CONTACT
John Smith
Manager
email.email.co.uk
+44 (0) 191 000 0001
CONTACT DETAILS
www.nepicmember.com
info@nepicmember.com
+44 (0) 191 000 0001
1 nepic member, Middlesbrough

CATEGORY
Consultants

NEPIC Member



Profile
Log in to members hub to view full details

MAIN CONTACT
John Smith
Manager
email.email.co.uk
+44 (0) 191 000 0001
CONTACT DETAILS
www.nepicmember.com
info@nepicmember.com
+44 (0) 191 000 0001
1 nepic member, Middlesbrough

CATEGORY
Consultants

NEPIC Member



Profile
Log in to members hub to view full details

MAIN CONTACT
John Smith
Manager
email.email.co.uk
+44 (0) 191 000 0001
CONTACT DETAILS
www.nepicmember.com
info@nepicmember.com
+44 (0) 191 000 0001
1 nepic member, Middlesbrough

CATEGORY
Consultants

NEPIC Member



Profile
Log in to members hub to view full details

MAIN CONTACT
John Smith
Manager
email.email.co.uk
+44 (0) 191 000 0001
CONTACT DETAILS
www.nepicmember.com
info@nepicmember.com
+44 (0) 191 000 0001
1 nepic member, Middlesbrough

CATEGORY
Consultants

NEPIC Member



Profile
Log in to members hub to view full details

MAIN CONTACT
John Smith
Manager
email.email.co.uk
+44 (0) 191 000 0001
CONTACT DETAILS
www.nepicmember.com
info@nepicmember.com
+44 (0) 191 000 0001
1 nepic member, Middlesbrough

CATEGORY
Consultants

NEPIC Member



Profile
Log in to members hub to view full details

MAIN CONTACT
John Smith
Manager
email.email.co.uk
+44 (0) 191 000 0001
CONTACT DETAILS
www.nepicmember.com
info@nepicmember.com
+44 (0) 191 000 0001
1 nepic member, Middlesbrough

CATEGORY
Consultants

NEPIC Member



Profile
Log in to members hub to view full details

MAIN CONTACT
John Smith
Manager
email.email.co.uk
+44 (0) 191 000 0001
CONTACT DETAILS
www.nepicmember.com
info@nepicmember.com
+44 (0) 191 000 0001
1 nepic member, Middlesbrough

CATEGORY
Consultants

NEPIC Member



Profile
Log in to members hub to view full details

MAIN CONTACT
John Smith
Manager
email.email.co.uk
+44 (0) 191 000 0001
CONTACT DETAILS
www.nepicmember.com
info@nepicmember.com
+44 (0) 191 000 0001
1 nepic member, Middlesbrough

CATEGORY
Consultants

NEPIC Member



Profile
Log in to members hub to view full details

MAIN CONTACT
John Smith
Manager
email.email.co.uk
+44 (0) 191 000 0001
CONTACT DETAILS
www.nepicmember.com
info@nepicmember.com
+44 (0) 191 000 0001
1 nepic member, Middlesbrough

CATEGORY
Consultants

NEPIC Member



Profile
Log in to members hub to view full details

MAIN CONTACT
John Smith
Manager
email.email.co.uk
+44 (0) 191 000 0001
CONTACT DETAILS
www.nepicmember.com
info@nepicmember.com
+44 (0) 191 000 0001
1 nepic member, Middlesbrough

CATEGORY
Consultants

NEPIC Member



Profile
Log in to members hub to view full details

MAIN CONTACT
John Smith
Manager
email.email.co.uk
+44 (0) 191 000 0001
CONTACT DETAILS
www.nepicmember.com
info@nepicmember.com
+44 (0) 191 000 0001
1 nepic member, Middlesbrough

CATEGORY
Consultants

NEPIC Member



Profile
Log in to members hub to view full details

MAIN CONTACT
John Smith
Manager
email.email.co.uk
+44 (0) 191 000 0001
CONTACT DETAILS
www.nepicmember.com
info@nepicmember.com
+44 (0) 191 000 0001
1 nepic member, Middlesbrough

CATEGORY
Consultants

NEPIC Member



Profile
Log in to members hub to view full details

MAIN CONTACT
John Smith
Manager
email.email.co.uk
+44 (0) 191 000 0001
CONTACT DETAILS
www.nepicmember.com
info@nepicmember.com
+44 (0) 191 000 0001
1 nepic member, Middlesbrough

CATEGORY
Consultants

NEPIC Member



Profile
Log in to members hub to view full details

MAIN CONTACT
John Smith
Manager
email.email.co.uk
+44 (0) 191 000 0001
CONTACT DETAILS
www.nepicmember.com
info@nepicmember.com
+44 (0) 191 000 0001
1 nepic member, Middlesbrough

CATEGORY
Consultants

NEPIC Member



Profile
Log in to members hub to view full details

MAIN CONTACT
John Smith
Manager
email.email.co.uk
+44 (0) 191 000 0001
CONTACT DETAILS
www.nepicmember.com
info@nepicmember.com
+44 (0) 191 000 0001
1 nepic member, Middlesbrough

CATEGORY
Consultants

NEPIC Member



Profile
Log in to members hub to view full details

MAIN CONTACT
John Smith
Manager
email.email.co.uk
+44 (0) 191 000 0001
CONTACT DETAILS
www.nepicmember.com
info@nepicmember.com
+44 (0) 191 000 0001
1 nepic member, Middlesbrough

CATEGORY
Consultants

NEPIC Member



Profile
Log in to members hub to view full details

MAIN CONTACT
John Smith
Manager
email.email.co.uk
+44 (0) 191 000 0001
CONTACT DETAILS
www.nepicmember.com
info@nepicmember.com
+44 (0) 191 000 0001
1 nepic member, Middlesbrough

CATEGORY
Consultants

NEPIC Member



Profile
Log in to members hub to view full details

MAIN CONTACT
John Smith
Manager
email.email.co.uk
+44 (0) 191 000 0001
CONTACT DETAILS
www.nepicmember.com
info@nepicmember.com
+44 (0) 191 000 0001
1 nepic member, Middlesbrough

CATEGORY
Consultants

NEPIC Member



Profile
Log in to members hub to view full details

MAIN CONTACT
John Smith
Manager
email.email.co.uk
+44 (0) 191 000 0001
CONTACT DETAILS
www.nepicmember.com
info@nepicmember.com
+44 (0) 191 000 0001
1 nepic member, Middlesbrough

CATEGORY
Consultants

NEPIC Member



Profile
Log in to members hub to view full details

MAIN CONTACT
John Smith
Manager
email.email.co.uk
+44 (0) 191 000 0001
CONTACT DETAILS
www.nepicmember.com
info@nepicmember.com
+44 (0) 191 000 0001
1 nepic member, Middlesbrough

CATEGORY
Consultants

NEPIC Member



Profile
Log in to members hub to view full details

MAIN CONTACT
John Smith
Manager
email.email.co.uk
+44 (0) 191 000 0001
CONTACT DETAILS
www.nepicmember.com
info@nepicmember.com
+44 (0) 191 000 0001
1 nepic member, Middlesbrough

CATEGORY
Consultants



**Worktraq streamlines
your business operations
by connecting all your
field staff from
any device, anywhere!**

Jenny Driver
Warehouse Manager



Bob Jones
General Manager



Richard Guard
Security

The Store

Benefits Include:

- Quoting System
- Manage Jobs
- Field Staff
- Track Jobs In Real Time
- Live Chat To All Staff
- Re-route Staff To Emergency Jobs
- Produce Timesheets
- Track Assets
- Track Vehicles
- Bespoke Reporting
- Invoicing

Would you like a Demonstration?

Please contact the sales department
on 01642 792567 • 01325 582121
0191 8160444 or email info@worktraq.co.uk

NEPIC Member



Profile

Log in to members hub to view full details

MAIN CONTACT

John Smith
Manager
email.email.co.uk
+44 (0) 191 000 0001

CONTACT DETAILS

www.nepicmember.com
info@nepicmember.com
+44 (0) 191 000 0001

1 nepic member, Middlesbrough

CATEGORY

Consultants

NEPIC Member



Profile

Log in to members hub to view full details

MAIN CONTACT

John Smith
Manager
email.email.co.uk
+44 (0) 191 000 0001

CONTACT DETAILS

www.nepicmember.com
info@nepicmember.com
+44 (0) 191 000 0001

1 nepic member, Middlesbrough

CATEGORY

Consultants

NEPIC Member



Profile

Log in to members hub to view full details

MAIN CONTACT

John Smith
Manager
email.email.co.uk
+44 (0) 191 000 0001

CONTACT DETAILS

www.nepicmember.com
info@nepicmember.com
+44 (0) 191 000 0001

1 nepic member, Middlesbrough

CATEGORY

Consultants

NEPIC Member



Profile
Log in to members hub to view full details

MAIN CONTACT
John Smith
Manager
email.email.co.uk
+44 (0) 191 000 0001
CONTACT DETAILS
 www.nepicmember.com
 info@nepicmember.com
 +44 (0) 191 000 0001
1 nepic member, Middlesbrough

CATEGORY
Consultants

NEPIC Member



Profile
Log in to members hub to view full details

MAIN CONTACT
John Smith
Manager
email.email.co.uk
+44 (0) 191 000 0001
CONTACT DETAILS
 www.nepicmember.com
 info@nepicmember.com
 +44 (0) 191 000 0001
1 nepic member, Middlesbrough

CATEGORY
Consultants

NEPIC Member



Profile
Log in to members hub to view full details

MAIN CONTACT
John Smith
Manager
email.email.co.uk
+44 (0) 191 000 0001
CONTACT DETAILS
 www.nepicmember.com
 info@nepicmember.com
 +44 (0) 191 000 0001
1 nepic member, Middlesbrough

CATEGORY
Consultants

NEPIC Member



Profile
Log in to members hub to view full details

MAIN CONTACT
John Smith
Manager
email.email.co.uk
+44 (0) 191 000 0001
CONTACT DETAILS
 www.nepicmember.com
 info@nepicmember.com
 +44 (0) 191 000 0001
1 nepic member, Middlesbrough

CATEGORY
Consultants

NEPIC Member



Profile
Log in to members hub to view full details

MAIN CONTACT
John Smith
Manager
email.email.co.uk
+44 (0) 191 000 0001
CONTACT DETAILS
 www.nepicmember.com
 info@nepicmember.com
 +44 (0) 191 000 0001
1 nepic member, Middlesbrough

CATEGORY
Consultants

NEPIC Member



Profile
Log in to members hub to view full details

MAIN CONTACT
John Smith
Manager
email.email.co.uk
+44 (0) 191 000 0001
CONTACT DETAILS
 www.nepicmember.com
 info@nepicmember.com
 +44 (0) 191 000 0001
1 nepic member, Middlesbrough

CATEGORY
Consultants

MIKE WALKER

PHOTOGRAPHY

BIPP
British Institute of
Professional Photography

**PROVIDING UNIQUE PHOTOGRAPHS AND VIDEO
SHOWCASING ASSET ENGINEERING COMPLEXITIES
FOR CONCISE PROGRESS COMMUNICATIONS,
MARKETING, AND BRANDING PROCESSES.**

I am Mike Walker, a Teesside based Architectural & Industrial/Engineering photographer. I aid multinational Petrochemical, Energy, Construction and Engineering Companies, with striking and unique media, showcasing the complexities and progress of asset engineering for communications and marketing processes.

I am a Professional Photographer and Qualified Licentiate of the **British Institute of Professional Photography**. With an extensive Project Engineering and Design background, I have a wealth of experience gained from 40+ years, predominantly on Top Tier COMAH Petrochemical, Construction and Industrial sites.

With businesses relying on visual media to showcase operations, services, and development projects, I provide a bespoke cost-effective service to help companies publicise internally or to wider audiences. Most importantly for Key Projects, Directors, Managers, and financial backers rely on remote reporting where Professional Photography can make a real difference in succinctly informing status and preserving confidence and support.

I produce media tailored to a company's requirements showcasing their projects, diversity, range, and content in aspects of engineering, design, fabrication, construction, EHSS, project milestones/key events and operation through to demolition. I support a variety of businesses recording and showcasing their work through photography, timelapse and video.

For more information please contact Mike Walker:

Mob: +44(0)7970 573550

Email: mike@mikewalker-photography.co.uk

Web: www.mikewalker-photography.co.uk

VIEW OUR PROFILE ON P.109

NEPIC Member



Profile

Log in to members hub to view full details

MAIN CONTACT

John Smith
Manager
email.email.co.uk
+44 (0) 191 000 0001

CONTACT DETAILS

www.nepicmember.com

info@nepicmember.com

+44 (0) 191 000 0001

1 nepic member, Middlesbrough

CATEGORY

Consultants

NEPIC Member



Profile

Log in to members hub to view full details

MAIN CONTACT

John Smith
Manager
email.email.co.uk
+44 (0) 191 000 0001

CONTACT DETAILS

www.nepicmember.com

info@nepicmember.com

+44 (0) 191 000 0001

1 nepic member, Middlesbrough

CATEGORY

Consultants

NEPIC Member



Profile

Log in to members hub to view full details

MAIN CONTACT

John Smith
Manager
email.email.co.uk
+44 (0) 191 000 0001

CONTACT DETAILS

www.nepicmember.com

info@nepicmember.com

+44 (0) 191 000 0001

1 nepic member, Middlesbrough

CATEGORY

Consultants

Navigator Terminals provides over 1.28 million m³ of storage across our 4 UK Storage Terminals.

We deliver a quality service driven by innovation and underpinned by excellence in health & safety and environmental consideration.

Contact the commercial team:
Navigator Terminals
+44(0) 1642 546767
mail@navigatorterminals.com



VIEW OUR PROFILE ON P.119

MEMBER
PROFILES

NEPIC Member



Profile
Log in to members hub to view full details

MAIN CONTACT
John Smith
Manager
email.email.co.uk
+44 (0) 191 000 0001
CONTACT DETAILS
www.nepicmember.com
info@nepicmember.com
+44 (0) 191 000 0001
1 nepic member, Middlesbrough

CATEGORY
Consultants

NEPIC Member



Profile
Log in to members hub to view full details

MAIN CONTACT
John Smith
Manager
email.email.co.uk
+44 (0) 191 000 0001
CONTACT DETAILS
www.nepicmember.com
info@nepicmember.com
+44 (0) 191 000 0001
1 nepic member, Middlesbrough

CATEGORY
Consultants

NEPIC Member



Profile
Log in to members hub to view full details

MAIN CONTACT
John Smith
Manager
email.email.co.uk
+44 (0) 191 000 0001
CONTACT DETAILS
www.nepicmember.com
info@nepicmember.com
+44 (0) 191 000 0001
1 nepic member, Middlesbrough

CATEGORY
Consultants

NEPIC Member



Profile
Log in to members hub to view full details

MAIN CONTACT
John Smith
Manager
email.email.co.uk
+44 (0) 191 000 0001
CONTACT DETAILS
www.nepicmember.com
info@nepicmember.com
+44 (0) 191 000 0001
1 nepic member, Middlesbrough

CATEGORY
Consultants

NEPIC Member



Profile
Log in to members hub to view full details

MAIN CONTACT
John Smith
Manager
email.email.co.uk
+44 (0) 191 000 0001
CONTACT DETAILS
www.nepicmember.com
info@nepicmember.com
+44 (0) 191 000 0001
1 nepic member, Middlesbrough

CATEGORY
Consultants

NEPIC Member



Profile
Log in to members hub to view full details

MAIN CONTACT
John Smith
Manager
email.email.co.uk
+44 (0) 191 000 0001
CONTACT DETAILS
www.nepicmember.com
info@nepicmember.com
+44 (0) 191 000 0001
1 nepic member, Middlesbrough

CATEGORY
Consultants

NEPIC Member



Profile
Log in to members hub to view full details

MAIN CONTACT
John Smith
Manager
email.email.co.uk
+44 (0) 191 000 0001
CONTACT DETAILS
www.nepicmember.com
info@nepicmember.com
+44 (0) 191 000 0001
1 nepic member, Middlesbrough

CATEGORY
Consultants

NEPIC Member



Profile
Log in to members hub to view full details

MAIN CONTACT
John Smith
Manager
email.email.co.uk
+44 (0) 191 000 0001
CONTACT DETAILS
www.nepicmember.com
info@nepicmember.com
+44 (0) 191 000 0001
1 nepic member, Middlesbrough

CATEGORY
Consultants

NEPIC Member



Profile
Log in to members hub to view full details

MAIN CONTACT
John Smith
Manager
email.email.co.uk
+44 (0) 191 000 0001
CONTACT DETAILS
www.nepicmember.com
info@nepicmember.com
+44 (0) 191 000 0001
1 nepic member, Middlesbrough

CATEGORY
Consultants

NEPIC Member



Profile
Log in to members hub to view full details

MAIN CONTACT
John Smith
Manager
email.email.co.uk
+44 (0) 191 000 0001
CONTACT DETAILS
www.nepicmember.com
info@nepicmember.com
+44 (0) 191 000 0001
1 nepic member, Middlesbrough

CATEGORY
Consultants

NEPIC Member



Profile
Log in to members hub to view full details

MAIN CONTACT
John Smith
Manager
email.email.co.uk
+44 (0) 191 000 0001
CONTACT DETAILS
www.nepicmember.com
info@nepicmember.com
+44 (0) 191 000 0001
1 nepic member, Middlesbrough

CATEGORY
Consultants

NEPIC Member



Profile
Log in to members hub to view full details

MAIN CONTACT
John Smith
Manager
email.email.co.uk
+44 (0) 191 000 0001
CONTACT DETAILS
www.nepicmember.com
info@nepicmember.com
+44 (0) 191 000 0001
1 nepic member, Middlesbrough

CATEGORY
Consultants

NEPIC Member



Profile
Log in to members hub to view full details

MAIN CONTACT
John Smith
Manager
email.email.co.uk
+44 (0) 191 000 0001
CONTACT DETAILS
www.nepicmember.com
info@nepicmember.com
+44 (0) 191 000 0001
1 nepic member, Middlesbrough

CATEGORY
Consultants

NEPIC Member



Profile
Log in to members hub to view full details

MAIN CONTACT
John Smith
Manager
email.email.co.uk
+44 (0) 191 000 0001
CONTACT DETAILS
www.nepicmember.com
info@nepicmember.com
+44 (0) 191 000 0001
1 nepic member, Middlesbrough

CATEGORY
Consultants

NEPIC Member



Profile
Log in to members hub to view full details

MAIN CONTACT
John Smith
Manager
email.email.co.uk
+44 (0) 191 000 0001
CONTACT DETAILS
www.nepicmember.com
info@nepicmember.com
+44 (0) 191 000 0001
1 nepic member, Middlesbrough

CATEGORY
Consultants

NEPIC Member



Profile
Log in to members hub to view full details

MAIN CONTACT
John Smith
Manager
email.email.co.uk
+44 (0) 191 000 0001
CONTACT DETAILS
www.nepicmember.com
info@nepicmember.com
+44 (0) 191 000 0001
1 nepic member, Middlesbrough

CATEGORY
Consultants

NEPIC Member



Profile
Log in to members hub to view full details

MAIN CONTACT
John Smith
Manager
email.email.co.uk
+44 (0) 191 000 0001
CONTACT DETAILS
www.nepicmember.com
info@nepicmember.com
+44 (0) 191 000 0001
1 nepic member, Middlesbrough

CATEGORY
Consultants

NEPIC Member



Profile
Log in to members hub to view full details

MAIN CONTACT
John Smith
Manager
email.email.co.uk
+44 (0) 191 000 0001
CONTACT DETAILS
www.nepicmember.com
info@nepicmember.com
+44 (0) 191 000 0001
1 nepic member, Middlesbrough

CATEGORY
Consultants

NEPIC Member



Profile
Log in to members hub to view full details

MAIN CONTACT
John Smith
Manager
email.email.co.uk
+44 (0) 191 000 0001
CONTACT DETAILS
www.nepicmember.com
info@nepicmember.com
+44 (0) 191 000 0001
1 nepic member, Middlesbrough

CATEGORY
Consultants

NEPIC Member



Profile
Log in to members hub to view full details

MAIN CONTACT
John Smith
Manager
email.email.co.uk
+44 (0) 191 000 0001
CONTACT DETAILS
www.nepicmember.com
info@nepicmember.com
+44 (0) 191 000 0001
1 nepic member, Middlesbrough

CATEGORY
Consultants

NEPIC Member



Profile
Log in to members hub to view full details

MAIN CONTACT
John Smith
Manager
email.email.co.uk
+44 (0) 191 000 0001
CONTACT DETAILS
www.nepicmember.com
info@nepicmember.com
+44 (0) 191 000 0001
1 nepic member, Middlesbrough

CATEGORY
Consultants



BUYING & SELLING USED PROCESS PLANT & EQUIPMENT SINCE 1932

Used & refurbished process equipment in stock at our North East facility.

Main Equipment:

- Centrifuges
- Dryers
- Evaporators
- Filters
- Heat Exchangers
- Mills
- Mixers & Blenders
- Reactors
- Tanks & Vessels
- Plants & Lines

Industries:

- Chemical
- Pharmaceutical
- Food Processing

Services:

- Immediate Delivery
- Equipment Testing
- Mechanical Refurbishment
- Equipment Disposal



Contact Us:

Station Road, Aycliffe Business Park,
Newton Aycliffe, County Durham, DL5 6EQ

Web: www.perryprocess.co.uk
Email: ppel@perryprocess.co.uk
Tel.: 01325 315 111

NEPIC Member



Profile

Log in to members hub to view full details

MAIN CONTACT

John Smith
Manager
email.email.co.uk
+44 (0) 191 000 0001

CONTACT DETAILS

www.nepicmember.com
info@nepicmember.com
+44 (0) 191 000 0001
1 nepic member, Middlesbrough

CATEGORY

Consultants

NEPIC Member



Profile

Log in to members hub to view full details

MAIN CONTACT

John Smith
Manager
email.email.co.uk
+44 (0) 191 000 0001

CONTACT DETAILS

www.nepicmember.com
info@nepicmember.com
+44 (0) 191 000 0001
1 nepic member, Middlesbrough

CATEGORY

Consultants

NEPIC Member



Profile

Log in to members hub to view full details

MAIN CONTACT

John Smith
Manager
email.email.co.uk
+44 (0) 191 000 0001

CONTACT DETAILS

www.nepicmember.com
info@nepicmember.com
+44 (0) 191 000 0001
1 nepic member, Middlesbrough

CATEGORY

Consultants

NEPIC Member



Profile
Log in to members hub to view full details

MAIN CONTACT
John Smith
Manager
email.email.co.uk
+44 (0) 191 000 0001
CONTACT DETAILS
www.nepicmember.com
info@nepicmember.com
+44 (0) 191 000 0001
1 nepic member, Middlesbrough

CATEGORY
Consultants

NEPIC Member



Profile
Log in to members hub to view full details

MAIN CONTACT
John Smith
Manager
email.email.co.uk
+44 (0) 191 000 0001
CONTACT DETAILS
www.nepicmember.com
info@nepicmember.com
+44 (0) 191 000 0001
1 nepic member, Middlesbrough

CATEGORY
Consultants

NEPIC Member



Profile
Log in to members hub to view full details

MAIN CONTACT
John Smith
Manager
email.email.co.uk
+44 (0) 191 000 0001
CONTACT DETAILS
www.nepicmember.com
info@nepicmember.com
+44 (0) 191 000 0001
1 nepic member, Middlesbrough

CATEGORY
Consultants

NEPIC Member



Profile
Log in to members hub to view full details

MAIN CONTACT
John Smith
Manager
email.email.co.uk
+44 (0) 191 000 0001
CONTACT DETAILS
www.nepicmember.com
info@nepicmember.com
+44 (0) 191 000 0001
1 nepic member, Middlesbrough

CATEGORY
Consultants

NEPIC Member



Profile
Log in to members hub to view full details

MAIN CONTACT
John Smith
Manager
email.email.co.uk
+44 (0) 191 000 0001
CONTACT DETAILS
www.nepicmember.com
info@nepicmember.com
+44 (0) 191 000 0001
1 nepic member, Middlesbrough

CATEGORY
Consultants

NEPIC Member



Profile
Log in to members hub to view full details

MAIN CONTACT
John Smith
Manager
email.email.co.uk
+44 (0) 191 000 0001
CONTACT DETAILS
www.nepicmember.com
info@nepicmember.com
+44 (0) 191 000 0001
1 nepic member, Middlesbrough

CATEGORY
Consultants

NEPIC Member



Profile
Log in to members hub to view full details

MAIN CONTACT
John Smith
Manager
email.email.co.uk
+44 (0) 191 000 0001
CONTACT DETAILS
www.nepicmember.com
info@nepicmember.com
+44 (0) 191 000 0001
1 nepic member, Middlesbrough

CATEGORY
Consultants

NEPIC Member



Profile
Log in to members hub to view full details

MAIN CONTACT
John Smith
Manager
email.email.co.uk
+44 (0) 191 000 0001
CONTACT DETAILS
www.nepicmember.com
info@nepicmember.com
+44 (0) 191 000 0001
1 nepic member, Middlesbrough

CATEGORY
Consultants

NEPIC Member



Profile
Log in to members hub to view full details

MAIN CONTACT
John Smith
Manager
email.email.co.uk
+44 (0) 191 000 0001
CONTACT DETAILS
www.nepicmember.com
info@nepicmember.com
+44 (0) 191 000 0001
1 nepic member, Middlesbrough

CATEGORY
Consultants

NEPIC Member



Profile
Log in to members hub to view full details

MAIN CONTACT
John Smith
Manager
email.email.co.uk
+44 (0) 191 000 0001
CONTACT DETAILS
www.nepicmember.com
info@nepicmember.com
+44 (0) 191 000 0001
1 nepic member, Middlesbrough

CATEGORY
Consultants

NEPIC Member



Profile
Log in to members hub to view full details

MAIN CONTACT
John Smith
Manager
email.email.co.uk
+44 (0) 191 000 0001
CONTACT DETAILS
www.nepicmember.com
info@nepicmember.com
+44 (0) 191 000 0001
1 nepic member, Middlesbrough

CATEGORY
Consultants

NEPIC Member



Profile
Log in to members hub to view full details

MAIN CONTACT
John Smith
Manager
email.email.co.uk
+44 (0) 191 000 0001
CONTACT DETAILS
www.nepicmember.com
info@nepicmember.com
+44 (0) 191 000 0001
1 nepic member, Middlesbrough

CATEGORY
Consultants



RISK & HAZARD MANAGEMENT

Understanding and facilitating the effective management of risk is our core business.
Our expertise covers the full range of risk assessment and management services.



Safety Risk

Business Risk

Environment Risk

Only when the risk facing an organisation is well understood can it be effectively managed. Key to the successful identification, assessment and management of risk is engagement with the right people, using the right processes at the right time. We believe we are different to many of our competitors and our approach is distinctive, we don't always walk the well-trodden path but look at each client's particular risk context and develop a tailored solution, working in partnership with our client.

We work across all aspects of risk, from Quantitative Risk Assessments and Predictive & Consequence modelling, through to the 'softer' risks which may affect an organisation's reputation.



Cogent assured providers –
Process Safety Management for Operations (PSMO)



Authorized distributor for CGE Risk –
BowTieXP software

NEPIC Member



Profile
Log in to members hub to view full details

MAIN CONTACT
John Smith
Manager
email.email.co.uk
+44 (0) 191 000 0001
CONTACT DETAILS
www.nepicmember.com
info@nepicmember.com
+44 (0) 191 000 0001
1 nepic member, Middlesbrough

CATEGORY
Consultants

NEPIC Member



Profile
Log in to members hub to view full details

MAIN CONTACT
John Smith
Manager
email.email.co.uk
+44 (0) 191 000 0001
CONTACT DETAILS
www.nepicmember.com
info@nepicmember.com
+44 (0) 191 000 0001
1 nepic member, Middlesbrough

CATEGORY
Consultants

NEPIC Member



Profile
Log in to members hub to view full details

MAIN CONTACT
John Smith
Manager
email.email.co.uk
+44 (0) 191 000 0001
CONTACT DETAILS
www.nepicmember.com
info@nepicmember.com
+44 (0) 191 000 0001
1 nepic member, Middlesbrough

CATEGORY
Consultants

NEPIC Member



Profile
Log in to members hub to view full details

MAIN CONTACT
John Smith
Manager
email.email.co.uk
+44 (0) 191 000 0001
CONTACT DETAILS
www.nepicmember.com
info@nepicmember.com
+44 (0) 191 000 0001
1 nepic member, Middlesbrough

CATEGORY
Consultants

NEPIC Member



Profile
Log in to members hub to view full details

MAIN CONTACT
John Smith
Manager
email.email.co.uk
+44 (0) 191 000 0001
CONTACT DETAILS
www.nepicmember.com
info@nepicmember.com
+44 (0) 191 000 0001
1 nepic member, Middlesbrough

CATEGORY
Consultants

NEPIC Member



Profile
Log in to members hub to view full details

MAIN CONTACT
John Smith
Manager
email.email.co.uk
+44 (0) 191 000 0001
CONTACT DETAILS
www.nepicmember.com
info@nepicmember.com
+44 (0) 191 000 0001
1 nepic member, Middlesbrough

CATEGORY
Consultants

NEPIC Member



Profile
Log in to members hub to view full details

MAIN CONTACT
John Smith
Manager
email.email.co.uk
+44 (0) 191 000 0001
CONTACT DETAILS
www.nepicmember.com
info@nepicmember.com
+44 (0) 191 000 0001
1 nepic member, Middlesbrough

CATEGORY
Consultants

NEPIC Member



Profile
Log in to members hub to view full details

MAIN CONTACT
John Smith
Manager
email.email.co.uk
+44 (0) 191 000 0001
CONTACT DETAILS
www.nepicmember.com
info@nepicmember.com
+44 (0) 191 000 0001
1 nepic member, Middlesbrough

CATEGORY
Consultants

NEPIC Member



Profile
Log in to members hub to view full details

MAIN CONTACT
John Smith
Manager
email.email.co.uk
+44 (0) 191 000 0001
CONTACT DETAILS
www.nepicmember.com
info@nepicmember.com
+44 (0) 191 000 0001
1 nepic member, Middlesbrough

CATEGORY
Consultants

NEPIC Member



Profile
Log in to members hub to view full details

MAIN CONTACT
John Smith
Manager
email.email.co.uk
+44 (0) 191 000 0001
CONTACT DETAILS
 www.nepicmember.com
 info@nepicmember.com
 +44 (0) 191 000 0001
1 nepic member, Middlesbrough

CATEGORY
Consultants

NEPIC Member



Profile
Log in to members hub to view full details

MAIN CONTACT
John Smith
Manager
email.email.co.uk
+44 (0) 191 000 0001
CONTACT DETAILS
 www.nepicmember.com
 info@nepicmember.com
 +44 (0) 191 000 0001
1 nepic member, Middlesbrough

CATEGORY
Consultants

NEPIC Member



Profile
Log in to members hub to view full details

MAIN CONTACT
John Smith
Manager
email.email.co.uk
+44 (0) 191 000 0001
CONTACT DETAILS
 www.nepicmember.com
 info@nepicmember.com
 +44 (0) 191 000 0001
1 nepic member, Middlesbrough

CATEGORY
Consultants

NEPIC Member



Profile
Log in to members hub to view full details

MAIN CONTACT
John Smith
Manager
email.email.co.uk
+44 (0) 191 000 0001
CONTACT DETAILS
 www.nepicmember.com
 info@nepicmember.com
 +44 (0) 191 000 0001
1 nepic member, Middlesbrough

CATEGORY
Consultants

NEPIC Member



Profile
Log in to members hub to view full details

MAIN CONTACT
John Smith
Manager
email.email.co.uk
+44 (0) 191 000 0001
CONTACT DETAILS
 www.nepicmember.com
 info@nepicmember.com
 +44 (0) 191 000 0001
1 nepic member, Middlesbrough

CATEGORY
Consultants

NEPIC Member



Profile
Log in to members hub to view full details

MAIN CONTACT
John Smith
Manager
email.email.co.uk
+44 (0) 191 000 0001
CONTACT DETAILS
 www.nepicmember.com
 info@nepicmember.com
 +44 (0) 191 000 0001
1 nepic member, Middlesbrough

CATEGORY
Consultants

NEPIC Member



Profile
Log in to members hub to view full details

MAIN CONTACT
John Smith
Manager
email.email.co.uk
+44 (0) 191 000 0001
CONTACT DETAILS
www.nepicmember.com
info@nepicmember.com
+44 (0) 191 000 0001
1 nepic member, Middlesbrough

CATEGORY
Consultants

NEPIC Member



Profile
Log in to members hub to view full details

MAIN CONTACT
John Smith
Manager
email.email.co.uk
+44 (0) 191 000 0001
CONTACT DETAILS
www.nepicmember.com
info@nepicmember.com
+44 (0) 191 000 0001
1 nepic member, Middlesbrough

CATEGORY
Consultants

NEPIC Member



Profile
Log in to members hub to view full details

MAIN CONTACT
John Smith
Manager
email.email.co.uk
+44 (0) 191 000 0001
CONTACT DETAILS
www.nepicmember.com
info@nepicmember.com
+44 (0) 191 000 0001
1 nepic member, Middlesbrough

CATEGORY
Consultants

NEPIC Member



Profile
Log in to members hub to view full details

MAIN CONTACT
John Smith
Manager
email.email.co.uk
+44 (0) 191 000 0001
CONTACT DETAILS
www.nepicmember.com
info@nepicmember.com
+44 (0) 191 000 0001
1 nepic member, Middlesbrough

CATEGORY
Consultants

NEPIC Member



Profile
Log in to members hub to view full details

MAIN CONTACT
John Smith
Manager
email.email.co.uk
+44 (0) 191 000 0001
CONTACT DETAILS
www.nepicmember.com
info@nepicmember.com
+44 (0) 191 000 0001
1 nepic member, Middlesbrough

CATEGORY
Consultants

NEPIC Member



Profile
Log in to members hub to view full details

MAIN CONTACT
John Smith
Manager
email.email.co.uk
+44 (0) 191 000 0001
CONTACT DETAILS
www.nepicmember.com
info@nepicmember.com
+44 (0) 191 000 0001
1 nepic member, Middlesbrough

CATEGORY
Consultants

NEPIC Member



Profile
Log in to members hub to view full details

MAIN CONTACT
John Smith
Manager
email.email.co.uk
+44 (0) 191 000 0001
CONTACT DETAILS
 www.nepicmember.com
 info@nepicmember.com
 +44 (0) 191 000 0001
1 nepic member, Middlesbrough

CATEGORY
Consultants

NEPIC Member



Profile
Log in to members hub to view full details

MAIN CONTACT
John Smith
Manager
email.email.co.uk
+44 (0) 191 000 0001
CONTACT DETAILS
 www.nepicmember.com
 info@nepicmember.com
 +44 (0) 191 000 0001
1 nepic member, Middlesbrough

CATEGORY
Consultants

NEPIC Member



Profile
Log in to members hub to view full details

MAIN CONTACT
John Smith
Manager
email.email.co.uk
+44 (0) 191 000 0001
CONTACT DETAILS
 www.nepicmember.com
 info@nepicmember.com
 +44 (0) 191 000 0001
1 nepic member, Middlesbrough

CATEGORY
Consultants

NEPIC Member



Profile
Log in to members hub to view full details

MAIN CONTACT
John Smith
Manager
email.email.co.uk
+44 (0) 191 000 0001
CONTACT DETAILS
 www.nepicmember.com
 info@nepicmember.com
 +44 (0) 191 000 0001
1 nepic member, Middlesbrough

CATEGORY
Consultants

NEPIC Member



Profile
Log in to members hub to view full details

MAIN CONTACT
John Smith
Manager
email.email.co.uk
+44 (0) 191 000 0001
CONTACT DETAILS
 www.nepicmember.com
 info@nepicmember.com
 +44 (0) 191 000 0001
1 nepic member, Middlesbrough

CATEGORY
Consultants

NEPIC Member



Profile
Log in to members hub to view full details

MAIN CONTACT
John Smith
Manager
email.email.co.uk
+44 (0) 191 000 0001
CONTACT DETAILS
 www.nepicmember.com
 info@nepicmember.com
 +44 (0) 191 000 0001
1 nepic member, Middlesbrough

CATEGORY
Consultants

NEPIC Member



Profile
Log in to members hub to view full details

MAIN CONTACT
John Smith
Manager
email.email.co.uk
+44 (0) 191 000 0001
CONTACT DETAILS
www.nepicmember.com
info@nepicmember.com
+44 (0) 191 000 0001
1 nepic member, Middlesbrough

CATEGORY
Consultants

NEPIC Member



Profile
Log in to members hub to view full details

MAIN CONTACT
John Smith
Manager
email.email.co.uk
+44 (0) 191 000 0001
CONTACT DETAILS
www.nepicmember.com
info@nepicmember.com
+44 (0) 191 000 0001
1 nepic member, Middlesbrough

CATEGORY
Consultants

NEPIC Member



Profile
Log in to members hub to view full details

MAIN CONTACT
John Smith
Manager
email.email.co.uk
+44 (0) 191 000 0001
CONTACT DETAILS
www.nepicmember.com
info@nepicmember.com
+44 (0) 191 000 0001
1 nepic member, Middlesbrough

CATEGORY
Consultants

NEPIC Member



Profile
Log in to members hub to view full details

MAIN CONTACT
John Smith
Manager
email.email.co.uk
+44 (0) 191 000 0001
CONTACT DETAILS
www.nepicmember.com
info@nepicmember.com
+44 (0) 191 000 0001
1 nepic member, Middlesbrough

CATEGORY
Consultants

NEPIC Member



Profile
Log in to members hub to view full details

MAIN CONTACT
John Smith
Manager
email.email.co.uk
+44 (0) 191 000 0001
CONTACT DETAILS
www.nepicmember.com
info@nepicmember.com
+44 (0) 191 000 0001
1 nepic member, Middlesbrough

CATEGORY
Consultants

NEPIC Member



Profile
Log in to members hub to view full details

MAIN CONTACT
John Smith
Manager
email.email.co.uk
+44 (0) 191 000 0001
CONTACT DETAILS
www.nepicmember.com
info@nepicmember.com
+44 (0) 191 000 0001
1 nepic member, Middlesbrough

CATEGORY
Consultants

NEPIC Member



Profile
Log in to members hub to view full details

MAIN CONTACT
John Smith
Manager
email.email.co.uk
+44 (0) 191 000 0001
CONTACT DETAILS
www.nepicmember.com
info@nepicmember.com
+44 (0) 191 000 0001
1 nepic member, Middlesbrough

CATEGORY
Consultants

NEPIC Member



Profile
Log in to members hub to view full details

MAIN CONTACT
John Smith
Manager
email.email.co.uk
+44 (0) 191 000 0001
CONTACT DETAILS
www.nepicmember.com
info@nepicmember.com
+44 (0) 191 000 0001
1 nepic member, Middlesbrough

CATEGORY
Consultants

NEPIC Member



Profile
Log in to members hub to view full details

MAIN CONTACT
John Smith
Manager
email.email.co.uk
+44 (0) 191 000 0001
CONTACT DETAILS
www.nepicmember.com
info@nepicmember.com
+44 (0) 191 000 0001
1 nepic member, Middlesbrough

CATEGORY
Consultants

NEPIC Member



Profile
Log in to members hub to view full details

MAIN CONTACT
John Smith
Manager
email.email.co.uk
+44 (0) 191 000 0001
CONTACT DETAILS
www.nepicmember.com
info@nepicmember.com
+44 (0) 191 000 0001
1 nepic member, Middlesbrough

CATEGORY
Consultants

NEPIC Member



Profile
Log in to members hub to view full details

MAIN CONTACT
John Smith
Manager
email.email.co.uk
+44 (0) 191 000 0001
CONTACT DETAILS
www.nepicmember.com
info@nepicmember.com
+44 (0) 191 000 0001
1 nepic member, Middlesbrough

CATEGORY
Consultants

NEPIC Member



Profile
Log in to members hub to view full details

MAIN CONTACT
John Smith
Manager
email.email.co.uk
+44 (0) 191 000 0001
CONTACT DETAILS
www.nepicmember.com
info@nepicmember.com
+44 (0) 191 000 0001
1 nepic member, Middlesbrough

CATEGORY
Consultants

NEPIC Member



Profile
Log in to members hub to view full details

MAIN CONTACT
John Smith
Manager
email.email.co.uk
+44 (0) 191 000 0001
CONTACT DETAILS
www.nepicmember.com
info@nepicmember.com
+44 (0) 191 000 0001
1 nepic member, Middlesbrough

CATEGORY
Consultants

NEPIC Member



Profile
Log in to members hub to view full details

MAIN CONTACT
John Smith
Manager
email.email.co.uk
+44 (0) 191 000 0001
CONTACT DETAILS
www.nepicmember.com
info@nepicmember.com
+44 (0) 191 000 0001
1 nepic member, Middlesbrough

CATEGORY
Consultants

NEPIC Member



Profile
Log in to members hub to view full details

MAIN CONTACT
John Smith
Manager
email.email.co.uk
+44 (0) 191 000 0001
CONTACT DETAILS
www.nepicmember.com
info@nepicmember.com
+44 (0) 191 000 0001
1 nepic member, Middlesbrough

CATEGORY
Consultants

NEPIC Member



Profile
Log in to members hub to view full details

MAIN CONTACT
John Smith
Manager
email.email.co.uk
+44 (0) 191 000 0001
CONTACT DETAILS
www.nepicmember.com
info@nepicmember.com
+44 (0) 191 000 0001
1 nepic member, Middlesbrough

CATEGORY
Consultants

NEPIC Member



Profile
Log in to members hub to view full details

MAIN CONTACT
John Smith
Manager
email.email.co.uk
+44 (0) 191 000 0001
CONTACT DETAILS
www.nepicmember.com
info@nepicmember.com
+44 (0) 191 000 0001
1 nepic member, Middlesbrough

CATEGORY
Consultants

NEPIC Member



Profile
Log in to members hub to view full details

MAIN CONTACT
John Smith
Manager
email.email.co.uk
+44 (0) 191 000 0001
CONTACT DETAILS
www.nepicmember.com
info@nepicmember.com
+44 (0) 191 000 0001
1 nepic member, Middlesbrough

CATEGORY
Consultants



VIEW OUR PROFILE ON P.142

We need your help to change lives across Teesside.

We're supporting people and families across Teesside who've been affected by a terminal illness. We help them make the most of everyday, ensuring they receive the best possible care by creating experiences and memories that last a lifetime.

Everybody gets treated as an individual, whether it's physical, mental or emotional support they need from us. We support people to stay as independent as possible for as long as possible.

We're bringing people together. From patients, family, friends to our clinical team, counsellors, staff, volunteers and our fundraisers. We make sure that everyone gets to live well until the very end.

If you and your team can help raise vital funds, please contact Anne Cooling, Head of Corporate Development on annecooling@teessidehospice.co.uk or 07500805716.



 @TeessideHospice
 teessidehospice
 @teessidehospice
 teessidehospice
www.teessidehospice.org

 Registered with
**FUNDRAISING
REGULATOR**
Registered Charity No: 512875

MEMBER
PROFILES

NEPIC Member






Profile
Log in to members hub to view full details

MAIN CONTACT

John Smith
Manager
email.email.co.uk
+44 (0) 191 000 0001

CONTACT DETAILS

 www.nepicmember.com
 info@nepicmember.com
 +44 (0) 191 000 0001

1 nepic member, Middlesbrough

CATEGORY
Consultants

NEPIC Member



Profile
Log in to members hub to view full details

MAIN CONTACT

John Smith
Manager
email.email.co.uk
+44 (0) 191 000 0001

CONTACT DETAILS

 www.nepicmember.com
 info@nepicmember.com
 +44 (0) 191 000 0001

1 nepic member, Middlesbrough

CATEGORY
Consultants

NEPIC Member





Profile
Log in to members hub to view full details

MAIN CONTACT

John Smith
Manager
email.email.co.uk
+44 (0) 191 000 0001

CONTACT DETAILS

 www.nepicmember.com
 info@nepicmember.com
 +44 (0) 191 000 0001

1 nepic member, Middlesbrough

CATEGORY
Consultants

NEPIC Member



Profile
Log in to members hub to view full details

MAIN CONTACT
John Smith
Manager
email.email.co.uk
+44 (0) 191 000 0001
CONTACT DETAILS
www.nepicmember.com
info@nepicmember.com
+44 (0) 191 000 0001
1 nepic member, Middlesbrough

CATEGORY
Consultants

NEPIC Member



Profile
Log in to members hub to view full details

MAIN CONTACT
John Smith
Manager
email.email.co.uk
+44 (0) 191 000 0001
CONTACT DETAILS
www.nepicmember.com
info@nepicmember.com
+44 (0) 191 000 0001
1 nepic member, Middlesbrough

CATEGORY
Consultants

NEPIC Member



Profile
Log in to members hub to view full details

MAIN CONTACT
John Smith
Manager
email.email.co.uk
+44 (0) 191 000 0001
CONTACT DETAILS
www.nepicmember.com
info@nepicmember.com
+44 (0) 191 000 0001
1 nepic member, Middlesbrough

CATEGORY
Consultants

NEPIC Member



Profile
Log in to members hub to view full details

MAIN CONTACT
John Smith
Manager
email.email.co.uk
+44 (0) 191 000 0001
CONTACT DETAILS
www.nepicmember.com
info@nepicmember.com
+44 (0) 191 000 0001
1 nepic member, Middlesbrough

CATEGORY
Consultants

NEPIC Member



Profile
Log in to members hub to view full details

MAIN CONTACT
John Smith
Manager
email.email.co.uk
+44 (0) 191 000 0001
CONTACT DETAILS
www.nepicmember.com
info@nepicmember.com
+44 (0) 191 000 0001
1 nepic member, Middlesbrough

CATEGORY
Consultants

NEPIC Member



Profile
Log in to members hub to view full details

MAIN CONTACT
John Smith
Manager
email.email.co.uk
+44 (0) 191 000 0001
CONTACT DETAILS
www.nepicmember.com
info@nepicmember.com
+44 (0) 191 000 0001
1 nepic member, Middlesbrough

CATEGORY
Consultants

NEPIC Member



Profile
Log in to members hub to view full details

MAIN CONTACT
John Smith
Manager
email.email.co.uk
+44 (0) 191 000 0001
CONTACT DETAILS
www.nepicmember.com
info@nepicmember.com
+44 (0) 191 000 0001
1 nepic member, Middlesbrough

CATEGORY
Consultants

NEPIC Member



Profile
Log in to members hub to view full details

MAIN CONTACT
John Smith
Manager
email.email.co.uk
+44 (0) 191 000 0001
CONTACT DETAILS
www.nepicmember.com
info@nepicmember.com
+44 (0) 191 000 0001
1 nepic member, Middlesbrough

CATEGORY
Consultants

NEPIC Member



Profile
Log in to members hub to view full details

MAIN CONTACT
John Smith
Manager
email.email.co.uk
+44 (0) 191 000 0001
CONTACT DETAILS
www.nepicmember.com
info@nepicmember.com
+44 (0) 191 000 0001
1 nepic member, Middlesbrough

CATEGORY
Consultants

NEPIC Member



Profile
Log in to members hub to view full details

MAIN CONTACT
John Smith
Manager
email.email.co.uk
+44 (0) 191 000 0001
CONTACT DETAILS
www.nepicmember.com
info@nepicmember.com
+44 (0) 191 000 0001
1 nepic member, Middlesbrough

CATEGORY
Consultants

NEPIC Member



Profile
Log in to members hub to view full details

MAIN CONTACT
John Smith
Manager
email.email.co.uk
+44 (0) 191 000 0001
CONTACT DETAILS
www.nepicmember.com
info@nepicmember.com
+44 (0) 191 000 0001
1 nepic member, Middlesbrough

CATEGORY
Consultants

NEPIC Member



Profile
Log in to members hub to view full details

MAIN CONTACT
John Smith
Manager
email.email.co.uk
+44 (0) 191 000 0001
CONTACT DETAILS
www.nepicmember.com
info@nepicmember.com
+44 (0) 191 000 0001
1 nepic member, Middlesbrough

CATEGORY
Consultants

NEPIC Member



Profile
Log in to members hub to view full details

MAIN CONTACT
John Smith
Manager
email.email.co.uk
+44 (0) 191 000 0001
CONTACT DETAILS
www.nepicmember.com
info@nepicmember.com
+44 (0) 191 000 0001
1 nepic member, Middlesbrough

CATEGORY
Consultants

NEPIC Member



Profile
Log in to members hub to view full details

MAIN CONTACT
John Smith
Manager
email.email.co.uk
+44 (0) 191 000 0001
CONTACT DETAILS
www.nepicmember.com
info@nepicmember.com
+44 (0) 191 000 0001
1 nepic member, Middlesbrough

CATEGORY
Consultants

NEPIC Member



Profile
Log in to members hub to view full details

MAIN CONTACT
John Smith
Manager
email.email.co.uk
+44 (0) 191 000 0001
CONTACT DETAILS
www.nepicmember.com
info@nepicmember.com
+44 (0) 191 000 0001
1 nepic member, Middlesbrough

CATEGORY
Consultants

NEPIC Member



Profile
Log in to members hub to view full details

MAIN CONTACT
John Smith
Manager
email.email.co.uk
+44 (0) 191 000 0001
CONTACT DETAILS
www.nepicmember.com
info@nepicmember.com
+44 (0) 191 000 0001
1 nepic member, Middlesbrough

CATEGORY
Consultants

NEPIC Member



Profile
Log in to members hub to view full details

MAIN CONTACT
John Smith
Manager
email.email.co.uk
+44 (0) 191 000 0001
CONTACT DETAILS
www.nepicmember.com
info@nepicmember.com
+44 (0) 191 000 0001
1 nepic member, Middlesbrough

CATEGORY
Consultants

NEPIC Member



Profile
Log in to members hub to view full details

MAIN CONTACT
John Smith
Manager
email.email.co.uk
+44 (0) 191 000 0001
CONTACT DETAILS
www.nepicmember.com
info@nepicmember.com
+44 (0) 191 000 0001
1 nepic member, Middlesbrough

CATEGORY
Consultants

NEPIC Member



Profile
Log in to members hub to view full details

MAIN CONTACT
John Smith
Manager
email.email.co.uk
+44 (0) 191 000 0001
CONTACT DETAILS
www.nepicmember.com
info@nepicmember.com
+44 (0) 191 000 0001
1 nepic member, Middlesbrough

CATEGORY
Consultants

NEPIC Member



Profile
Log in to members hub to view full details

MAIN CONTACT
John Smith
Manager
email.email.co.uk
+44 (0) 191 000 0001
CONTACT DETAILS
www.nepicmember.com
info@nepicmember.com
+44 (0) 191 000 0001
1 nepic member, Middlesbrough

CATEGORY
Consultants

NEPIC Member



Profile
Log in to members hub to view full details

MAIN CONTACT
John Smith
Manager
email.email.co.uk
+44 (0) 191 000 0001
CONTACT DETAILS
www.nepicmember.com
info@nepicmember.com
+44 (0) 191 000 0001
1 nepic member, Middlesbrough

CATEGORY
Consultants

NEPIC Member



Profile
Log in to members hub to view full details

MAIN CONTACT
John Smith
Manager
email.email.co.uk
+44 (0) 191 000 0001
CONTACT DETAILS
www.nepicmember.com
info@nepicmember.com
+44 (0) 191 000 0001
1 nepic member, Middlesbrough

CATEGORY
Consultants

NEPIC Member



Profile
Log in to members hub to view full details

MAIN CONTACT
John Smith
Manager
email.email.co.uk
+44 (0) 191 000 0001
CONTACT DETAILS
www.nepicmember.com
info@nepicmember.com
+44 (0) 191 000 0001
1 nepic member, Middlesbrough

CATEGORY
Consultants

NEPIC Member



Profile
Log in to members hub to view full details

MAIN CONTACT
John Smith
Manager
email.email.co.uk
+44 (0) 191 000 0001
CONTACT DETAILS
www.nepicmember.com
info@nepicmember.com
+44 (0) 191 000 0001
1 nepic member, Middlesbrough

CATEGORY
Consultants

NEPIC Member



Profile
Log in to members hub to view full details

MAIN CONTACT
John Smith
Manager
email.email.co.uk
+44 (0) 191 000 0001
CONTACT DETAILS
www.nepicmember.com
info@nepicmember.com
+44 (0) 191 000 0001
1 nepic member, Middlesbrough

CATEGORY
Consultants

NEPIC Member



Profile
Log in to members hub to view full details

MAIN CONTACT
John Smith
Manager
email.email.co.uk
+44 (0) 191 000 0001
CONTACT DETAILS
www.nepicmember.com
info@nepicmember.com
+44 (0) 191 000 0001
1 nepic member, Middlesbrough

CATEGORY
Consultants

NEPIC Member



Profile
Log in to members hub to view full details

MAIN CONTACT
John Smith
Manager
email.email.co.uk
+44 (0) 191 000 0001
CONTACT DETAILS
www.nepicmember.com
info@nepicmember.com
+44 (0) 191 000 0001
1 nepic member, Middlesbrough

CATEGORY
Consultants

NEPIC Member



Profile
Log in to members hub to view full details

MAIN CONTACT
John Smith
Manager
email.email.co.uk
+44 (0) 191 000 0001
CONTACT DETAILS
www.nepicmember.com
info@nepicmember.com
+44 (0) 191 000 0001
1 nepic member, Middlesbrough

CATEGORY
Consultants

NEPIC Member



Profile
Log in to members hub to view full details

MAIN CONTACT
John Smith
Manager
email.email.co.uk
+44 (0) 191 000 0001
CONTACT DETAILS
www.nepicmember.com
info@nepicmember.com
+44 (0) 191 000 0001
1 nepic member, Middlesbrough

CATEGORY
Consultants

NEPIC Member



Profile
Log in to members hub to view full details

MAIN CONTACT
John Smith
Manager
email.email.co.uk
+44 (0) 191 000 0001
CONTACT DETAILS
www.nepicmember.com
info@nepicmember.com
+44 (0) 191 000 0001
1 nepic member, Middlesbrough

CATEGORY
Consultants

NEPIC Member



Profile

Log in to members hub to view full details

MAIN CONTACT

John Smith
Manager
email@email.co.uk
+44 (0) 191 000 0001

CONTACT DETAILS

www.nepicmember.com

info@nepicmember.com

+44 (0) 191 000 0001

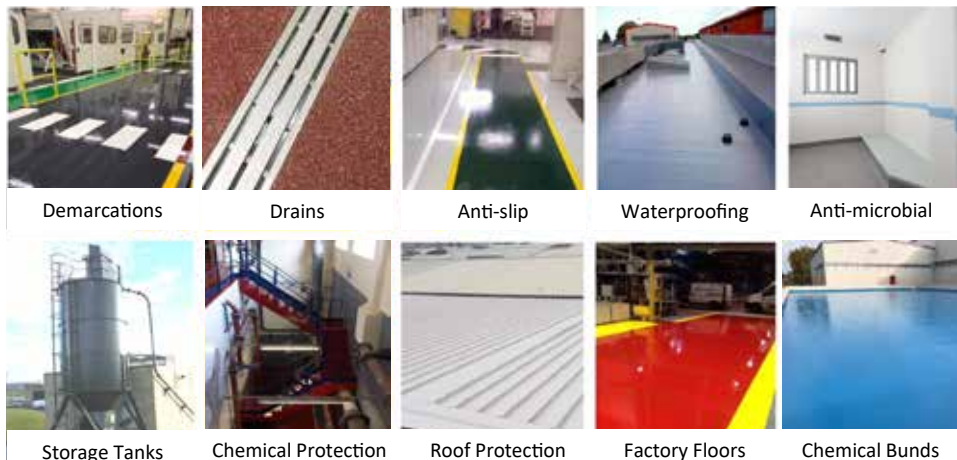
1 nepic member, Middlesbrough

CATEGORY

Consultants

VIEW OUR PROFILE ON P.129

One-Stop-Shop From Floor to Roof



All Surface Repair and Protection

Tel: 0191 378 2566

Visit www.reprotec.co.uk



Part of Reprotec Group

Repair & Maintenance
Products and Materials for
trade and public

Visit

www.RMSuppliers.com

Tel: 0191 389 7067

Company Classifications

Find the right contact
by sector speciality.

CLASSIFICATIONS

BIORESOURCES & RENEWABLES

Ensus UK Ltd
Greenergy Biofuels Teesside Limited
Veolia Environmental Services UK

BIOTECHNOLOGY

Absolute Antibody Research & Manufacturing
Calysta (UK)
Cambridge Research Biochemicals
FUJIFILM Diosynth Biotechnologies
Parker Bioscience
Quorn Foods

BUSINESS SUPPORT

Absolute Quality Consultancy & Training Ltd
Advance Northumberland Ltd
Beyond World Class (BWC) Performance
Bionow
Bonaccord
Britain's Energy Coast Business Cluster (BECBC)
British Association for Chemical Specialities (BACS)
Camerton Consultants
CATCH
Chemical Industries Association
Chemicals North West
Chemie-Cluster Bayern GmbH
Compliant
CPI - Centre for Process Innovation
Department for International Trade
Digital Catapult North East Tees Valley
Engineering & Manufacturing Network
ESA Europe Limited
FW Capital
Innovation SuperNetwork
Institute of Measurement and Control
Jennifer Thompson Strategy & Solutions
Knowledge Transfer Network
Lumo Tax
NEPIC
NOF
RTC North
Safe Machine Ltd
South Tees Development Corporation
Tees Valley Business
Tees Valley Combined Authority
WISE Campaign CIC

CHEMICALS

Applied Graphene Materials UK Ltd
BOC
CF Fertilisers UK Limited
Huntsman Polyurethanes (UK) Limited
INVISTA Textiles (U.K.) Ltd
Kemira Chemicals (UK)
Klüber Lubrication Great Britain
Mitsubishi Chemical Methacrylates
Mitsubishi Chemical UK (Electrolyte)
Safesol
SNF Oil & Gas Ltd
Venator Materials UK
Vertellus Specialties UK

CONSUMER GOODS

Procter & Gamble
Essity UK Ltd

CONTRACT MANUFACTURING

Seqens

EDUCATION & TRAINING

ARK Associates
Centre for Industry Education Collaboration (CIEC)
Cogent Skills Solutions
CPACT
Durham University
Education Training Collective
Hartlepool College of Further Education
High Tide Foundation
Newcastle College
Northumbria University
Roadmap MBA
Roxby Training Solutions
Synergy FTP Ltd t/a totrain
Teesside University
University of Bradford
University of Strathclyde CPACT (Centre for Process Analytics & Control Technology)
University of Sunderland

ENERGY & UTILITIES

BP
Calibrate Energy
Duranta Energy (Teesside)
EDF Energy
Encora Energy Ltd
Evides Industriewater UK
GridBeyond
Net Zero Teesside
Northern Endurance Partnership
Northumbrian Water
Sembcorp Utilities (UK)

ENGINEERING

6 Engineering
ABB Energy Industries
Actemium Automation Teesside
Altrad
Ashville Management Ltd
Bilfinger UK Ltd
Blackmonk Engineering Ltd
Bouygues Energies & Services
Britlift
Cavendish Northern
Emerson Automation Solutions
ENGIE Fabricom
Engineering Power Solutions Ltd
Erimus Insulation
FEG Ltd
Flexitallic North East Centre
Francis Brown Ltd
Graham Hart (Process Technology) Ltd
Haden Freeman Limited
HFL Consulting (now part of SLR)
Industrial and Marine Hydraulics (IMH)
JBA Engineering
K Home International Limited
Liberty Industrial
Lynas Engineers
PM Group
Projex Solutions
Siemens PLC, Industry Automation & Drives Technology
SPIE Ltd
Thornton Tomasetti
TJ Hazell (Engineering Consultants) Ltd
Vortex Global Ltd
WHP
Williams Process

Wilton Universal Group Ltd
Worley

ENGINEERING EQUIPMENT

Atlas Copco
AxFlow
Derwent James Ltd
Desotec
Eastgate Engineering Services Ltd
Endress + Hauser
Envirogen Group
Equipment Supplies & Consultancy Services Ltd
Glowled Ltd
Gutor Electronics
HYTORC
Jon Nesbitt Engineering Limited
JULABO UK Ltd
JWF Process Solutions
Kanon Liquid Handling
KGM Refrigeration
Masfix
MCE Group plc
Micropore Technologies
Pepperl+Fuchs
Perry Process Equipment Ltd
Power Wholesale
Precision Processing Services Limited
Rain for Rent International UK
RS Industrial Services Ltd
Sunbelt Rentals
Teledyne ISCO
Thermal Detection
Thermo Fisher Scientific
Thorne & Derrick International
United Rentals

ENGINEERING SERVICES

Addison Project PLC
AESSEAL (North East)
AIS Technical Ltd
Aspen Aerogels
Atlantic Projects Company (UK) Ltd
Axiom Engineering Associates Ltd
Becht
BPE Design and Support Ltd
Contec IAS UK Ltd
Doosan Babcock
Frazer-Nash Consultancy
Gee Dee Plant
GfG Gas Detection UK Ltd
Houghton International Electrical Services Ltd
IKM Consulting
Induchem Group
Industrial Technology Systems (ITS)
IRIS
James Walker UK
Logic-i
Matrix Power Ltd
Mistras Group Ltd
Optimal
Ove Arup & Partners
Peter J Douglas Engineering
Petrotec Engineering Limited
Process Decontamination Systems Ltd
Process Group ECI
Proeon Systems Limited
Quanta EPC Limited
RVA Group
Sheers
SyntheSys
Teesside Rigging & Lifting
Tracerco
TT Industrial

FACILITIES & SITE MANAGEMENT SERVICES

2M Services
Biochemica Group Ltd
Boulting Environmental Services (BES)
Calm Inductions
Future Industrial Services Ltd
Intasite Ltd
KDC Contractors
Reprotec Group
Wilton Centre
Wood plc

FINE & SPECIALITY CHEMICALS

Thomas Swan & Co Ltd

HEALTH, SAFETY & ENVIRONMENTAL

Cleveland Fire Brigade Risk Management
Ecus
Falck Fire Services UK
GexCon UK Ltd
Hawkes Fire
Indaver UK Ltd
Kill Line Pest Control
Lorraine Braben Consulting Ltd
MHT Technology
ProSalus
RAS Ltd
Recovery4Life
Teesside Hospice Care Foundation

HOSPITALITY AND LEISURE

Crathorne Hall Hotel
Middlesbrough Football Club
Rockliffe Hall Hotel

IT & TELECOMS

Autoscribe Informatics
Cellular Solutions (NE) Ltd
Digital Technologies Group
Elisian Limited
FNVi
FoCul
Fuzzy Logic Studio
IT Accessed Ltd.
Lucid Technology Solutions
Phusion
Tekgem (UK)

LABORATORY EQUIPMENT

Anatune
GPE Scientific Limited
Specac

LOGISTICS & DISTRIBUTION

Brenntag Birtley
Bulkhaul Limited
Den Hartogh Logistics
Exolum Terminals Ltd
IPS Flow Systems
Navigator Terminals North East
Octobox
PD Ports

MARKETING, PR, EVENTS, DESIGN & PRINTING

CX Marketing
Horizon Works
Hospitality Guaranteed
Just Williams
MV Print Ltd
My Marketing Button
RDW Creative
Tees Business
Teesprint & Design
The WasteVyne

MINERALS & FERTILISERS

Anglo American
ICL Boulby
Power Minerals Limited

PETROCHEMICALS

ConocoPhillips (U.K) Teesside Operator Ltd
SABIC UK Petrochemicals
Stork, A Fluor Company

PHARMACEUTICALS

GlaxoSmithKline
KD Pharma UK
Lianhetech Seal Sands
Organon & Co
Piramal Healthcare - Pharma Solutions
Quotient Sciences
Recipharm
Sterling Pharma Solutions

POLYMER & RUBBER

Alpek Polyester UK
Eastern Seals (UK) Ltd
Mitsubishi Chemical UK (Specialty Polymers & Resins)
Pollywood
Vitrex Manufacturing

PROFESSIONAL SERVICES

Appleyard Lees
Britest Ltd
Business Doctors
Imvelo Ltd
DAC Beachcroft LLP
HGF
Marks & Clerk

Mike Walker Photography
Murgitroyd
Ravensworth Consulting
Solomons Europe
Square One Law
Tanton Industries
The Big Picture People
Turner & Townsend LLP
Womble Bond Dickinson (UK) LLP
WSP

RECRUITMENT & HR

CDS Recruitment Ltd
CY Partners
DBA HR Solutions Ltd
Hanson HR
HR2day Limited
Jackson Hogg
KDM Partnership
NRL Ltd
Techconsult UK
Wolviston Group Ltd

RESEARCH, DEVELOPMENT & ANALYTICAL

Edwards Analytical
Johnson Matthey
Newcastle University
Protel Projects
S A Partners LLC
Shimadzu UK Ltd
TWI

WASTE MANAGEMENT & RECYCLING

ReNew ELP
Suez R & R UK



Children Challenging Industry

BECOME A PARTNER

01904 322523 | CIEC.ORG.UK

The Centre for Industry Education
Collaboration (CIEC) creates and
sustains links between school science
and industry's people and practices.



"Several past pupils said the visit influenced them in their GCSE choices and made them think more closely about future careers. What struck me the most was the comments from many of the girls about their career paths."

With your support
we can inspire
the next generation
of industrialists!



You have inspired me to be a scientist.

Annabell

To get involved contact Joy Parvin at: Joy.parvin@york.ac.uk

VIEW OUR PROFILE ON P.61



Member Testimonial

TEESSIDE HOSPICE VALUES A
CHARITY PARTNERSHIP WITH
NEPIC.

**THIS ASSOCIATION RAISES
THE CHARITY'S PROFILE**

AND CREATES INCREASED
AWARENESS WITHIN THE
CORPORATE SECTOR.

Teesside Hospice

NEPIC Directory is published annually by the North East of England Process Industry Cluster Limited (trading as NEPIC). While every care has been taken to ensure that all material is accurate at the time of going to press, NEPIC cannot accept responsibility for errors or omissions and no liability is accepted for omission or failure from any cause.

All advertisements are accepted only on the grounds that they comply with the terms of the Trade Descriptions Act 1968 and all other relevant legislation. The inclusion of an advertisement cannot be constructed as an endorsement by NEPIC, their employees or agents.

No material in this publication may be reproduced in any form without prior written consent from NEPIC. For further information contact Louise Gwynne-Jones via: louise.gwynne-jones@nepic.co.uk.

