

# CASE STUDY

# LYNEMOUTH POWER STATION



HARRY PEERS STEELWORK

# RESTRICTIONS

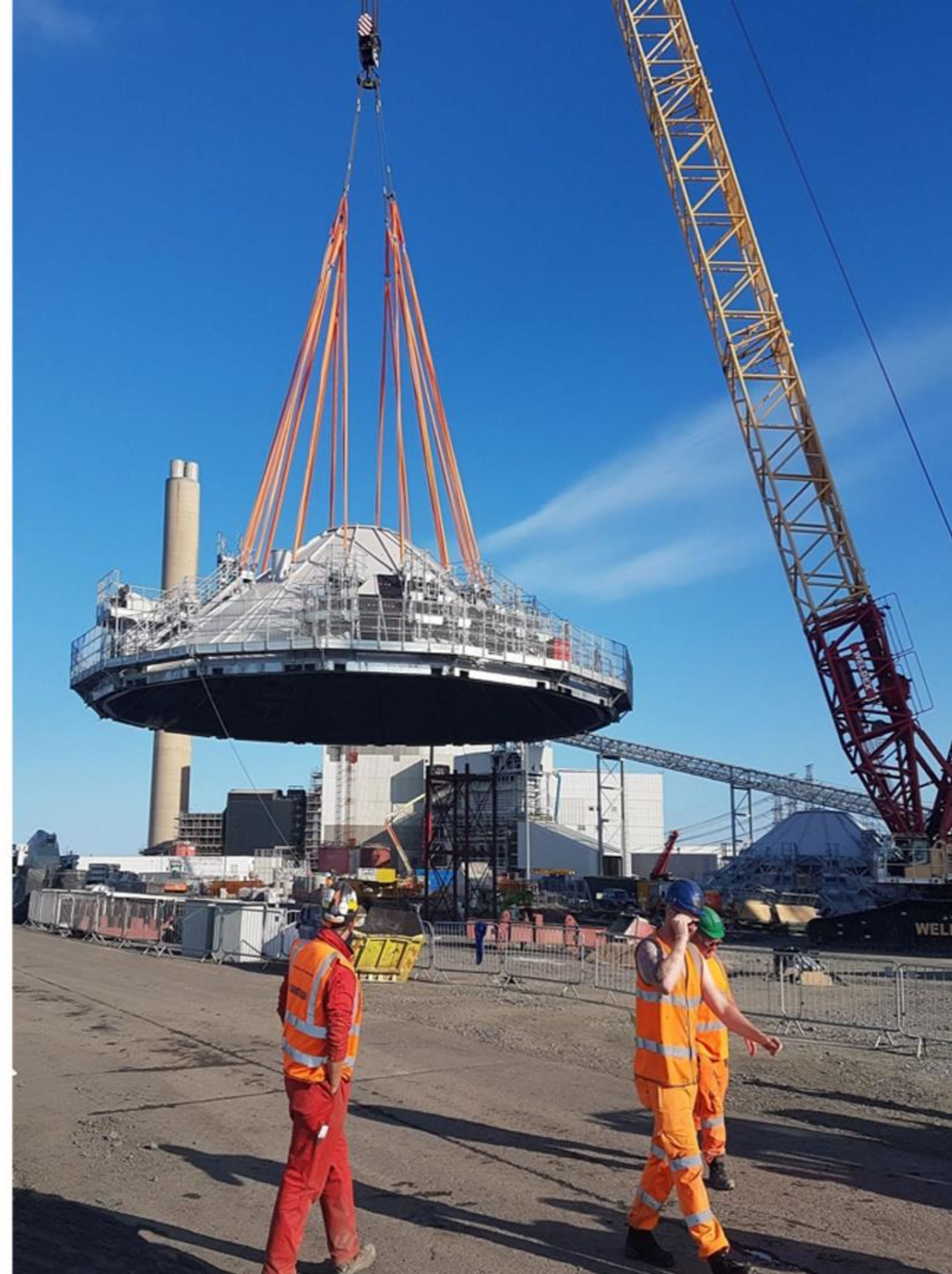
- Height of installation 43 metres from ground level
- Impact of weather due to coastal location
- Access for site labour
- Completion testing requirements





**HARRY PEERS STEELWORK**





HARRY PEERS STEELWORK



**HARRY PEERS STEELWORK**

# IMPACT OF MODULAR CONSTRUCTION

- Installation at height reduced from 4 weeks to 3 days per silo x 6  
**20.4 weeks reduction to installation at height**
- Overall reduction of prelims on site - 20.4 weeks saved  
**£163k saving to client**  
**£102k cost reduction for crantage**  
**£265k total saving**
- Reduced impact of wind and rain
- Significantly safer for installation team
- Reduced diesel emissions on site



# **BENEFITS OF MODULAR CONSTRUCTION**

- Modules construction at ground level
- Modules fitted out & tested prior to delivery
- Reduced use of cranes and site traffic
- Concurrent construction
- Health, Safety & Environment

